

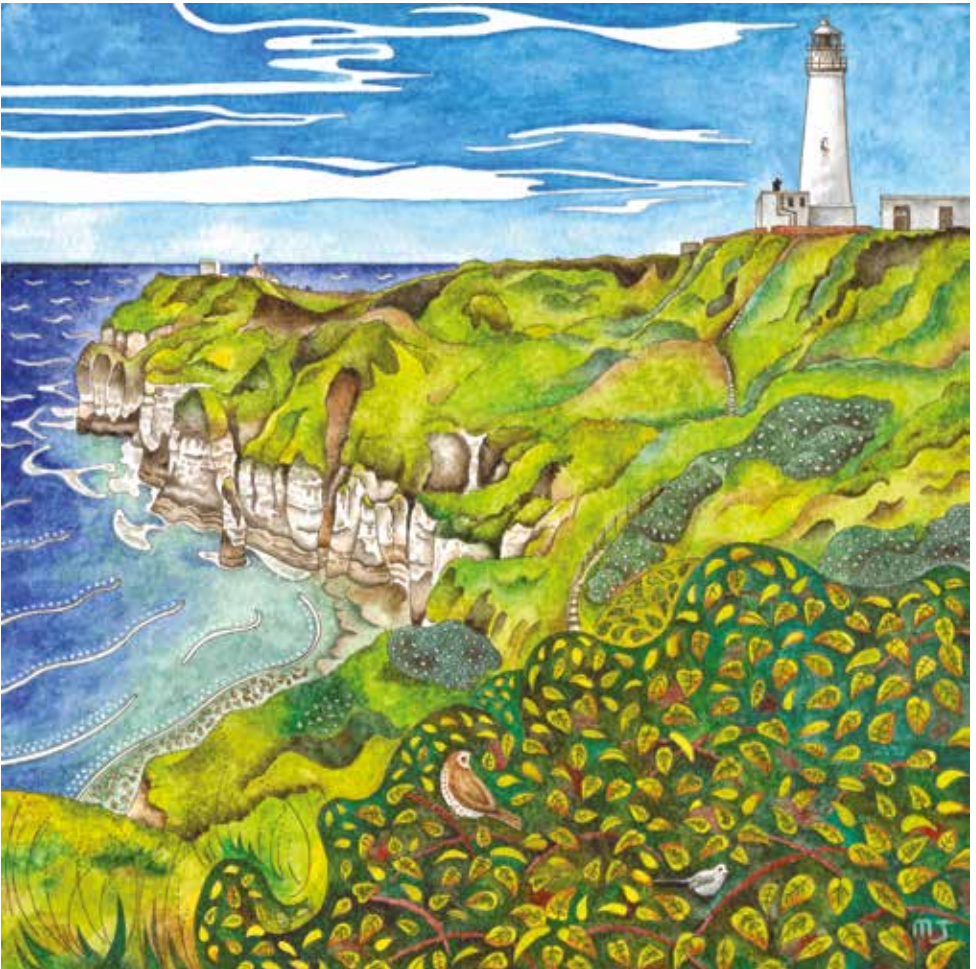


WALKING EAST YORKSHIRE FESTIVAL

YEAR OF THE
Coast
2023

Saturday 9th
to Friday 22nd
September 2023

for those who enjoy the great outdoors



© Martin Jones

www.walkingeastyorkshirefestival.co.uk

WALK, CYCLE, RIDE, EAT, DRINK, EXPLORE & DISCOVER

Join us in September to celebrate the 'Great Outdoors' with a packed programme of activities over 14 days, appealing to families, casual walkers and outdoor enthusiasts.

The festival shines a spotlight on the wonderful landscape of the Yorkshire Wolds, with its rolling hills and wide open spaces to the rugged shores of the heritage coastline.

Popular events include history tours of our market towns and stately homes; long-distance treks; Nordic walking, canal boat rides; horse riding; cycling; wildlife experiences; vineyard and brewery visits; wild foraging and outdoor yoga!

2023 marks 'Year of the Coast', and to celebrate we have a plethora of coastal activities to choose from.

Stay for the week and experience all East Yorkshire has to offer. Choose from a rustic rural retreat; a boutique hotel in a historic market town or glamping in the grounds of a stately home. Whatever type of accommodation makes a holiday special, you'll find it here in beautiful East Yorkshire. www.visiteastyorkshire.co.uk

While every effort is made to ensure the accuracy of information detailed in this guide, East Riding of Yorkshire Council, and Visit East Yorkshire cannot accept responsibility for any errors and omissions nor for any consequences arising from use of this guide. All information correct at time of going to press.

KEY TO EVENTS

-  Gentle walk suitable for most levels of fitness. Short countryside walks mainly on flat paths.
-  Moderate walk suitable for average fitness. Countryside walks with a few gradients and sometimes steps. Boots recommended.
-  Strenuous walk suitable for those with a good level of fitness. Countryside walks with steep gradients, steps or rough terrain. Boots essential.
-  A cycle ride
-  A horse ride
-  Family event
-  Toilet facilities
-  Dog friendly
-  Boating event
-  Swimming event
-  Canoeing event
-  Meditation event
-  Stately Home event
-  Suitable for Prams
-  Suitable for wheelchairs
-  Food trails/local producer

BOOKING

For health and safety reasons some events have a maximum number of participants. Booking is essential for these events. Please book early as places are limited.

Details of how to book can be found with each individual event. Some events do not require pre-booking.

CANCELLATIONS AND REFUNDS

No refund will be given unless the event is cancelled by the organisers or there are exceptional circumstances.

ARRIVING AT YOUR EVENT

You are advised to arrive at the event at least 10 minutes before the start time. There will be an event leader there to meet you whatever the weather. In unsafe conditions a safety assessment will be made and a decision may be taken to cancel the event if necessary.

WHAT YOU NEED TO KNOW

All young people under 16 attending the events listed must be accompanied by an adult.

PHOTOGRAPHS/ VIDEO FOOTAGE

Please note we may take photos and video footage at our events to use for future tourism and event related publicity. If you have any objections, please advise the leader at the start of the event.

DOGS

Where dogs are allowed this will be stipulated otherwise we ask that dogs are left at home.

CLOTHING AND WHAT TO BRING WITH YOU

Warm and waterproof clothing and suitable footwear is recommended on all events. Please wear walking boots on all walks. Please bring plenty to drink and on longer events you may need a packed lunch. If refreshments are available at the event location this will be stated in the programme or when you make your booking.

YOUR PERSONAL INFORMATION

Data will be kept under current GDPR rules for the sole purpose of Walking East Yorkshire Festival marketing.

CYCLE RIDES

All cycles must be roadworthy and in a good working condition. If in doubt please get your bike professionally serviced prior to the ride. All participants must wear a correctly fitting cycle safety helmet. On family rides it is recommended that each adult is responsible for no more than 2 children. Please ride your bike in accordance to the guidelines of the Highway Code.

HORSE RIDES

Horse and rider must have the fitness and competence to take part in the event and (if on your own horse) 3rd party liability insurance. Participants must wear a hi-viz jacket if provided, appropriate footwear and a hard hat of current standard.

ANY QUERIES

For full terms and conditions please visit www.walkingeastyorkshirefestival.co.uk/taking-part.

If you have any queries about any of the events or would like to discuss your suitability, please contact Beverley Tourist Information Centre.

Tel: (01482) 391672

Email: beverley.tic@eastriding.gov.uk



FESTIVAL AT A GLANCE

Please contact Beverley Tourist Information Centre if you would like to discuss your suitability for any of the walks in this years guide.

FRIDAY 8 th SEPTEMBER – FESTIVAL LAUNCH		Page
A town stroll round Pocklington's bygone pubs, inns and breweries	Pocklington	8
Migfest	Spurn Point	8
Over 500 years of history in less than 500 steps! walk	Beverley	8

SATURDAY 9 th SEPTEMBER		Page
Wold Rangers Way – Horsehair Jack Trod	Driffield	9
Hornsea - history, heritage and pottery!	Hornsea	9
King Charles III England Coast Path walk	Bridlington to Flamborough	10
Fred Elwell - a walk around his life and times	Beverley	12
The Age of Change walk	Beverley	12
From Field to Fork at Frith Farm	Beverley	12
Hull Maritime Tour	Hull	13
Bishop Burton Revealed walk	Bishop Burton	13
Migfest	Spurn Point	13
British Nordic Walking workshop	Beverley	14
Yorkshire Wolds Way - Family Geocaching Trail	Humber Bridge Country Park	14

SUNDAY 10 th SEPTEMBER		Page
King Charles III England Coast Path walk	Flamborough to Filey	15
Snaith & Cowick Heritage Celebration walk	Snaith	15
A walk from Warter on the beautiful Yorkshire Wolds	Warter	15
Fridaythorpe and the spectacular Yorkshire Wolds valleys	Beverley	16
Beverley - Lairgate Gossip walk	Beverley	16
From Field to Fork at Frith Farm	Beverley	16
Migfest	Spurn Point	16
Beverley – A Dollop of Trollope walk	Beverley	17
Victorian and Edwardian Goole walk	Goole	17
Goole's Cinemas, Theatres and Clubs walk	Goole	17
Hull Maritime Tour	Hull	18
Breeze Ladies Cycling	Beverley	56

MONDAY 11 th SEPTEMBER		Page
Boots & Breweries walk in the Vale of Snaith	Snaith	18
Walking and Wine around Little Wolds Vineyard	South Cave	19
Tickton – a village history walk	Tickton	19
When we made a big splash – ship building walk	Beverley	20
Beverley Minster – Hidden spaces and secret places	Beverley	20
Cycling - Monday evening meander	Driffield	21

TUESDAY 12th SEPTEMBER		Page
Beverley has talent! walk	Beverley	21
Beverley Minster tour – Hidden spaces and secret places	Beverley	21
Secrets of Sewerby walk	Sewerby	22
Iyengar Beach Yoga	Bridlington Beach	22
A Walking for Health – a walk from Nafferton	Nafferton	23
Windows on Beverley walk	Beverley	23
Doing good works	Beverley	23

WEDNESDAY 13th SEPTEMBER		Page
The North Wolds walk	Millington to Thixendales	24
A Withernsea Wander	Withernsea	25
A Boat Trip on the Pocklington Canal	Melbourne near Pocklington	25
The Battle of Stamford Bridge walk	Stamford Bridge	26
Energising Beach Yoga	Withernsea Beach	26
Syntan – a Heritage Visit	Beverley	27
Fred Elwell - a walk around his life and times	Beverley	27
Beverley – A Dollop of Trollope walk	Beverley	28
The Alta Via walk	Beverley	28

THURSDAY 14th SEPTEMBER		Page
The North Wolds walk	Thixendale to Millington	29
Between the Vines at Laurel Vines Vineyard	Aike	29
Out with the old and in with the new walk	Beverley	29
Hull Maritime Tour	Hull	30
Beach Yoga for Hip Mobility	Hornsea	30
Cycling – Monumental ride!	Driffield	31

FRIDAY 15th SEPTEMBER		Page
Cover The Coast - Fossil Hunt walk	Mappleton	31
Walking with the Aristocrats at the Carlton Towers Estate	Snaith	32
Quiet Gardens of Beverley walk	Beverley	32
When we made a big splash – ship building walk	Beverley	33

SATURDAY 16th SEPTEMBER		Page
Mary Wollstonecroft walk	Beverley	33
Nordic Walking 10K walk	North Cave Wetlands	34
Hull Maritime Tour	Hull	34
Cycling – Fiddler on the route!	Driffield	35

SUNDAY 17th SEPTEMBER		Page
E-Bikes cycling - Hornsea to Burton Constable	Hornsea	35
Wild Food Foraging Walk	East Cottingwith	36
Millington and the Chalkland Way walk	Millington	36
Bridlington Southshore to Boynton and back! walk	Bridlington	37
Yorkshire Wolds Way - Family Geocaching Trail	Market Weighton	37
Market Weighton Story walk	Market Weighton	38
Hull Maritime Tour	Hull	38
Stoned in Beverley walk	Beverley	39
Lairgate Gossip walk	Beverley	39
Breeze Ladies Cycling	Beverley	56

MONDAY 18th SEPTEMBER		Page
Wassand – a Regency Hall and Woodland walk	Hornsea	40
Beverley Minster tour – Hidden spaces and secret places	Beverley	40
Mary Wollstonecroft	Beverley	40
The Chalkland around Warter walk	Warter	40
Yoga and Breathwork Workshop	Hessle	41
The Age of Change walk	Beverley	41
Tipsters, Tricksters and the Odd nag – a walk linked to Beverley racecourse	Beverley	41
Disabled Ramble, Market Weighton Meander	Market Weighton	42
Cycling - Monday evening meander	Driffeld	42

TUESDAY 19th SEPTEMBER		Page
A day charter on Beverley Beck	Beverley to Aike	43
Quiet Gardens of Beverley walk	Beverley	43
Beverley Minster tour – Hidden spaces and secret places	Beverley	43
Green Plaques – History at eye-level-I bet you haven't seen it! walk	Beverley	44
Disabled Ramble, Discover the Yorkshire Wolds Way from Fridaythorpe	Fridaythorpe	44

WEDNESDAY 20th SEPTEMBER		Page
A Boat trip on the Pocklington Canal	Pocklington	45
Sewerby circular walk on the coastal path	Sewerby	45
Thixendale and the deserted village of Wharram Percy walk	Thixendale	46
Decoding Highgate walk	Beverley	46
Breeze Ladies Cycling	Beverley	56

THURSDAY 21st SEPTEMBER		Page
Boots and Beer walk	Wold Top Brewery	47
Hull Maritime Tour	Hull	47
RSPB Bempton Dusk walk	Bempton	48
Cycling – Autumn hues ride	Driffeld	48
Breeze Ladies Cycling	Beverley	56

FRIDAY 22 nd SEPTEMBER		Page
Cover the Coast – Spurn Point walk	Spurn Point	49
Walking the Geo-park Flamborough Head	Flamborough	49
Side Oven Bakery – tour and tasting!	Foston-on-the-Wolds	50
1779 Heritage Trail Walk – celebrating the Battle of Flamborough Head	Bridlington to Flamborough	50
The Beverley Ale Trail walk	Beverley	51

THROUGHOUT THE WEEK!		Page
Walking with Alpacas	North Cave	51
'What was here' App trails	Various locations	52
Love Exploring App	Various locations	52
Walking for Health	Various locations	52
Three Mills of the Southern Wolds	Various locations	53
Sewerby Hall and Gardens outdoor activities	Sewerby, Bridlington	54
Time travellers' theatre trail ERT	Beverley	55
Horse riding along Woldgate Woods	Various locations	56
On your Bike at Spurn Point	Spurn Point, Kilnsea	56

'Active Beacon' Photopost Project



Explore the East Yorkshire coast's iconic locations, whilst capturing its hidden gems on camera. A series of artistic wood turned photoposts lead the way, offering connected trails and way finding, with opportunities to support coastal monitoring of the landscape through the University of Hull's 'Active Learning' programme and free citizen-led science.

With strong links to the Blue Health agenda, the Photopost Project takes advantage of the region's blue spaces to improve active recreation, physical activity opportunities and mental wellbeing, through the development of connected and accessible infrastructure.

Taking inspiration from historic coastal landmarks, these sympathetic active beacons can be explored across a number of locations on the East Yorkshire coast, building links to the future rollout of the England Coast path throughout 2023 and beyond, including trails at:

*Sewerby to Bempton
Hornsea
Withernsea
Spurn Point*

YEAR OF THE
Coast
2023

Set out on a linear route to take in a cluster of posts, map your own circular route, or try and visit all 26 posts and cover the East Yorkshire coast - for more information and what3words locations, please visit -

www.visiteastyorkshire.co.uk/things-to-do/active-beacons-photopost-project-p1619071

FRIDAY 8th SEPTEMBER – FESTIVAL LAUNCH

A town stroll round Pocklington's bygone pubs, inns and breweries

Kicking off our 2023 Festival we invite you for an evening stroll. Pocklington was a centre for malting and brewing for centuries, and in the 1750s the town had 32 inns and alehouses. Some ten excellent hostelries survive today, and the Pocklington & District Local History Group will lead a circular stroll pointing out sites, stories and characters of the town's pubs and breweries, past and present. The walk starts outside Pocklington's oldest tavern, The Feathers, and will hopefully finish later inside with a drink.



Start Time: 6:30pm

Meeting Point: The Feathers Hotel, 56 Market Place, Pocklington, York YO42 2AH

Booking Essential: No, just turn up **Cost:** Free

Contact: Beverley Tourist Information Centre, The Treasure House, Champney Road, Beverley Tel: (01482) 391672 E: beverley.tic@eastriding.gov.uk

Migfest

Join the team at Spurn Bird Observatory for Migfest. Bird migration is one of the great wonders of the natural world and the Spurn Peninsula on Yorkshire's East Coast is arguably the best place in Britain to witness this spectacular. This fantastic festival has something for everyone – guided walks, talks, stalls, artists and food from the amazing Spurn Ladies and hopefully lots of birds for you to see across the weekend. There are many walks taking place over the weekend – migration walks, bird identification walks, a bat walk on Friday evening and even a plant walk. From early morning Saturday and Sunday there are migration watches and bird ringing demonstrations taking place. There are also art classes on both days run by renowned artist Darren Woodhead with photography and dig scoping classes as well.



Meeting Point: North Field, Spurn Migration Festival Venue, Easington Road, Kilnsea, Hull, HU12 0UH

Booking Essential: Yes

Contact: www.spurnmigfest.com
Scan the QR to book your ticket.



Over 500 years of history in less than 500 footsteps!

Join Colin Bradshaw for the shortest history walk we offer. In less than 500 footsteps you will be taken from the 20C back to the 16C. Incredibly we will range from drunks to members of the Temperance movement; from Dick Turpin to James Elwell; from a gentleman's club to evacuee children. And that is only a tiny taste of what you will encounter. On arrival at the Guildhall, you will be given a conducted tour, of one of the most fascinating buildings in Yorkshire, by the curators.



Start Time: 10am to 12noon

Meeting Point: Entrance to the Treasure House on Champney Road, Beverley, HU17 8HE

Booking Essential: Yes **Cost:** Free

Contact: Beverley Tourist Information Centre, The Treasure House, Champney Road, Beverley Tel: (01482) 391672 E: beverley.tic@eastriding.gov.uk

Additional Information: Please wear comfortable shoes for walking.

Wold Rangers Way – Horsehair Jack Trod

The Horse Hair Jack Trod (path) is one of a series of Wold Ranger Way trails. This guided circular walk is 9-miles taking place over a mixture of made-up footpaths, green lanes and tracks. The walk itself should take approximately 3 to 4 hours to complete depending on the walking pace of the group and the number of stops. Back in Driffield lunch will be served at Cass Hall, where you will also enjoy a talk about the creation of the Wold Rangers Way walk and history of some of the characters.



Start Time: 9:30am (3-4hours)

Distance: 9 miles

Meeting Point: The Wold Rangers Starting Point, Market Place, Driffield. YO25 6AN

Booking Essential: Yes

Cost: £12.50 – including lunch and a talk about the Wold Rangers
<https://woldrangersway.org/events.php>

Additional Information: On street parking is available in areas around Driffield but we recommend trying Eastgate car park, 43 Beck Side, Driffield YO25 6PG which offers unlimited, free parking. Other paid-for or restricted time car parks are available in the town. Please bring a morning snack and plenty to drink. Dogs must be kept on a lead through farmland. For full terms and conditions please visit the Wold Ranger Way website.

Hornsea - history, heritage and pottery!

Join us for a History walk around the beautiful seaside town of Hornsea. Learn a little of its past including the famous Hornsea Pottery founded in 1949 and employing up to 700 people in it's heyday. We will be covering a route that takes us to the old Railway station, the Mere (where we will stop for lunch), then onto Hallgarth park, a tour of St Nicholas Church and finishing up at Hornsea Museum - home to the Burns family for almost 300 years, where you will be able to view over 2,000 pieces of iconic Hornsea Pottery as well as visiting six buildings that include rooms depicting the Victorian age and a model of the old Hornsea Railway. Make a day of it and finish off at one of Hornsea's fabulous Fish and Chip restaurants!



Start Time: 11:00am to 2:00pm Afternoon access at the Museum - to take at your leisure.

Distance: 3 miles

Meeting Point: Trans Pennine Route Marker on the seafront (on the corner of South Promenade and Sands Lane). HU18 1PZ.

Booking Essential: Yes

Cost: Free

Contact: Beverley Tourist Information Centre, The Treasure House, Champney Road, Beverley, HU17 8HE. Tel: (01482) 391672
 E: beverley.tic@eastriding.gov.uk

Additional Information: Food can be purchased at the Mere or please bring a pack-up. FREE admission to Hornsea Museum. Children welcome. Please wear comfortable shoes for walking.

SATURDAY 9th and SUNDAY 10th SEPTEMBER



King Charles III England Coast Path Walk Bridlington to Filey Brigg

CELEBRATE YEAR OF THE COAST 2023!

Join us for an exhilarating coastal walk on a new section of the 'King Charles III England Coast Path' between Bridlington and Filey.

It'll be around 2,700 miles long when finished! To celebrate the completion of the first section within East Yorkshire – we invite you to join us for a two-day trek.

Start Time: 10am (both days)

Distance: 10m day 1/14m day 2
(24 miles total)

Booking Essential: Yes

Cost: £10 per person

Contact: Beverley Tourist Information Centre, The Treasure House, Champney Road, Beverley Tel: (01482) 391672
E: beverley.tic@eastriding.gov.uk



A TWO DAY COASTAL TREK

Day One (10 miles)

Our walk starts in the seaside town of Bridlington outside the iconic Bridlington Spa. From here we head through the harbour, recently crowned the lobster capital of Europe, landing over 300 tonnes of lobster a year – more than anywhere else in Europe. Proceeding north along the wide promenade we pass the amusements and leisure centre before leaving the town with Sewerby in our sights and views of the dramatic chalk cliff line. Our walk then passes through the deep ravine of Danes Dyke Nature reserve before reaching South Landing beach where we head briefly inland for a morning break at the Living Seas Centre where refreshments are available from Scrumdiddlyumptious by the sea. Heading back to the sea we explore the sculpture trail which winds its way through the woodland valley before returning to the coastal path. Heading towards Flamborough with the lighthouse in our views we pass a cape jutting out to sea which locals call the drinking dinosaur due to its Jurassic shape. Passing the old fog station, we reach Flamborough Head where an active Lighthouse acts as a waypoint for passing deep sea vessels heading towards Scarborough and Bridlington. From here we pass Selwick Bay where there is an abundance of wildlife to spot before making our way back to the car park along the cliff top to North Landing. Here you have the opportunity to take advantage of the Café and Ice cream Kiosk or have a walk down the slipway to North Landing Beach before returning home.

Meeting Point: Please park your vehicle at North Landing Car Park to catch the coach to Bridlington.

Address: North Marine Road – leading to North Landing, Flamborough. YO15 1LG

what3words: \\fuss.blip.tolls

Day Two (14 miles)

We leave Flamborough North Landing with its pretty coves and cobble boats and head in a northerly direction along the cliff path passing the beaches of Thornwick bay, little Thornwick and Chatterthrow. Here the coastline is particularly higgledy-piggledy where the North Sea has battered the chalk cliffs leaving a number of stack poles in its wake. We can spot a number of Active Beacon sculptural totems along this stretch of the coastline. Positioned at strategic points they enable us to monitor the changing coastline over time. A little further along this path we reach the spectacular RSPB Bempton Cliffs, home to the largest puffin colony in the country during the months of April and May where we enjoy a coffee stop and have a chance to read the information boards. Heading northwards the trail keeps to the cliff top and reaches its highest point on Speeton cliffs where the views north on a clear day take in Filey Brigg, Scarborough Castle, and Cloughton Wyke in the distance. Having skirted around the holiday park of Reighton sands we proceed through The Bay holiday village where we pass a number of attractive beach houses and a replica of the North Bar in Beverley which is the entrance to the village pub. Our final stretch takes us into the seaside town of Filey where the group are invited to join together for some well-earned Fish and Chips (paid for separately).

Meeting Point: Please park your vehicle in Filey to catch the bus from the Bus Station to North Landing.

Address: Bus Station, Station Avenue, Filey YO14 9AR

what3words: \\homeward.tight.trousers



Strenuous walk

Please note the coach will take us from the end point of each days walk to the start.

Fred Elwell - a walk around his life and times

Join guide Val Wise on a gentle walk which looks at people, places and paintings linked to the Elwell family in Beverley. We are hoping to conclude the walk with a visit to the garden at Bar House, Fred's home for 44 years.



Start Time: 2pm to 4pm

Meeting Point: Next to the clock in Station Square – across from the Railway Station, Station Square. HU17 0AS

Booking Essential: Yes

Cost: Free

Contact: Beverley Tourist Information Centre, The Treasure House, Champney Road, Beverley, HU17 8HE. Tel: (01482) 391672E: beverley.tic@eastriding.gov.uk

Additional Information: Please wear comfortable shoes for walking.

The Age of Change Walk

The area around North Bar reflects how the town has changed since the advent of the Georgian period. What are the changes that we can see in the life and times of this fashionable area of Beverley? Take a stroll with Carli Black and find out who lived in some of the houses when they were still quite new and now so lovingly conserved and updated. The lives and work of the residents give us a glimpse of life during a time of great change and advancement.



Start Time: 2pm to 4pm

Meeting Point: Outside St. Mary's Church, North Bar Within.

Booking Essential: Yes

Cost: Free

Contact: Beverley Tourist Information Centre, The Treasure House, Champney Road, Beverley, HU17 8HE. Tel: (01482) 391672 E: beverley.tic@eastriding.gov.uk

Additional Information: Please wear comfortable shoes for walking.

From Field to Fork at Frith Farm

Based within walking distance from the centre of Beverley, Frith is a local farm who provide local people with quality food. They are passionate about improving the way in which food is produced and distributed.

Frith invite you to join them for an open day drop-in session as part of the outdoor festival to take you on a tour of their facilities and talk about their journey and future aspirations.

Like what you see? There are opportunities for you to volunteer at Frith, get involved in a number of events held throughout the year including harvest mornings – of simply take advantage of their high quality, nutrient-dense food boxes full of locally grown produce.



Start Time: Drop in between 1pm to 4pm

Meeting Point: Frith Farm, Hull Bridge Road, Beverley. HU17 9RS

Booking Essential: No

Cost: Free

Additional Information: Please wear sensible shoes for the outdoor terrain. As part of the open day, you can sample the local produce and enjoy tea's, coffee and cake.

Hull Maritime Tour

Explore Hull's rich maritime history with a guided tour of the city centre. Led by a group of dedicated volunteers who are accredited White Badge tour guides, learn more about Hull and how the city has been shaped by its past, present and future. Starting at the Museum Quarter gardens we visit the future location of the Artic Corsair at North End Shipyard, Queens Gardens, the exterior of the Maritime Museum and the new location of the Spurn Lightship in Hull Marina. Other key landmarks include Blaydes House, Trinity House and Hull Marine.



Start Time: 10:30am to 1pm

Distance: 1.5 miles

Meeting Point: Starting at the Museum Quarter, outside Hull and East Riding Museum on High Street.

Booking Essential: Walk up bookings usually available or secure you place at www.maritimehull.co.uk/get-involved/guided-tours

Additional Information:



Max 20 per tour/session 2 hours

Bishop Burton Revealed walk

Bishop Burton is one of East Yorkshire's loveliest villages, with a long and distinguished history. Take a guided stroll with a local expert. Join local historian Leslie Hebb on a two-hour stroll around the village of Bishop Burton, where he will bring to life the history of the area from the Mesolithic era, and the village since the Domesday book with stories about the buildings, the changes and the people who lived there. He will take you to hidden parts you have not seen before! .



Start Time: 10am to 1pm

Meeting Point: Bishop Burton Parish Hall, 1 Cold Harbour View, Bishop Burton, Beverley, HU17 8QJ. There are several signs to the village hall and look out for HOD signs. What3Words/// cone.shackles.lasted

Booking Essential: Yes (from 1st to 8th September 2023)

Cost: Free

Contact: Jan Tel: (01964) 552364

Additional Information: The walk starts at the Village hall where there is parking, toilets and refreshments between 0930-1600.

Migfest

Join the team at Spurn Bird Observatory for Migfest. Bird migration is one of the great wonders of the natural world and the Spurn Peninsula on Yorkshire's East Coast is arguably the best place in Britain to witness this spectacular. – Full details on page 8.

British Nordic Walking workshop

Join British Nordic Walking Instructors on the Beverley Westwood for an Introductory Nordic Walking Workshop and learn the International Nordic Walking Federation's new technique. Then put it all into practice with a Nordic Walk around the beautiful Westwood to feel how amazing it is. Nordic Walking is a weight bearing exercise which uses up to 90% of the body's muscles and great for helping people get fitter, stronger and improving general physical and mental wellbeing. If you can't make the event but would like to Nordic Walk with us please email: jlsnordicwalking@gmail.com for more details of our free introductory and weekly walking sessions.



Start Time: 2pm to 3:30pm

Distance: 3 miles

Meeting Point: Where Westwood Road meets Walkington Road (Start of Beverley Parkrun) HU17 8EL (What 3 words app location: tastings.minus.gold)

Booking Essential: Yes

Cost: Free

Contact: Louise Mukerjea T: 07957 590189, Ejlsnordicwalking@gmail.com

Additional Information: Additional Information: No Dogs or children under 18. Everyone is required to complete a short online health questionnaire prior to the session. Comfortable flexible walking/ trail shoes are ideal. Nordic Walking poles will be provided to use - Please arrive 15 Minutes early to be fitted.

Yorkshire Wolds Way – Family Geocaching Trail

This is a great circular walk for all the family, with GPS treasure hunting along the way. Find all the Geocaches, record your finds and unscramble the word to complete the challenge. Enjoy this gently walk along a popular stretch of the Yorkshire Wolds Way, taking in the Humber Bridge Country Park Local Nature Reserve and stunning views of the Humber Bridge and Hessele foreshore.

(It is recommended that each group should have a maximum of 5 members, which must include at least one adult).



Start Time: Please drop in ANYTIME between 10am and 2pm, allowing 1.5 – 2 hours for your walk.

Distance: Approximately 2.5 miles and will take you approximately 1.5/2 hours to complete.

Meeting Point: Outside the Black Mill, Cliff Road, Hessele, East Riding of Yorkshire, England, HU13 0DF TA 02216 25399

What3Words///calculating.basket.backup
Parking available at the Mill or along Cliff Rd (free) and at the Country Park Inn (pay & display).

Booking Essential: Yes
www.bridspa.com/events

Cost: £5 per group (plus £10 refundable cash deposit on the day, for the loan of GPS)

King Charles III England Coast Path Walk - Bridlington to Filey Brigg

This is part of a two day walk along the newly opened King Charles III England Coast Path – Full details on page 10.

Snaith & Cowick Heritage Celebration Walk

An exciting journey celebrating the heritage of Snaith and Cowick. We start alongside the tranquil River Aire which was for many years teeming with sailing vessels loaded with all manner of goods. After an exhilarating walk across The Ings we will meander on quiet lanes to reach the magnificent splendour of 17th century Cowick Hall. A short woodland walk will lead to Little London where you will start to hear fascinating stories about ten colourful characters who visited Cowick many years ago. Back in Snaith, you will be able to marvel at our new rest area, installed to celebrate the 800th anniversary of our Market Charter. Finally, we reach the Market Place where you will be able to examine hundreds of classic motor bikes whilst enjoying refreshments from local caterers.



Start Time: 10am to 1pm

Distance: 6 miles

Meeting Point: Snaith Station Car Park, George Street, Snaith.DN14 9HY

Booking Essential: Yes

Cost: Free

Contact: Keith Greenwood from the Vale of Snaith Action Group.
Tel: 07518 029481
Email: keith_greenwood@hotmail.com

Additional Information: Please wear comfortable footwear.

A walk from Warter on the beautiful Yorkshire Wolds

This is a circular walk through varied landscapes with some road walking along quiet lanes. The walk begins with a route to the village of Nunburnholme and then along the edge of the Wolds with expansive views over the Vale of York. After passing along the ridge above Millington, the walk concludes along the old Roman road (originally from Brough to Malton) down into Warter. There will be a drinks break and a picnic lunch stop.



Start Time: 10am

Distance: 9 miles

Meeting Point: Warter-park in the village car park adjacent to the school. YO42 1XR

Booking Essential: Yes

Cost: Free

Contact: Beverley Tourist Information Centre, The Treasure House, Champney Road, Beverley, HU17 8HE. Tel: (01482) 391672
E: beverley.tic@eastriding.gov.uk

Additional Information: Please bring plenty to drink and a packed lunch.

Fridaythorpe and the spectacular Yorkshire Wolds valleys

Join us on our five hills circular walk from Fridaythorpe passing through classic Yorkshire Wolds landscapes in an area of outstanding beauty. This circular walk will involve walking up and down several hills, total ascent 410 metres. You will be rewarded with fine views and a chance to walk along several chalkland valleys. The route will be along the Yorkshire Wolds Way, heading due west, towards Gill's Farm, then down Thixen Dale with views of the Waves and Yime artwork to Thixendale village. Leaving Thixendale we stay on the Yorkshire Wolds/Centenary Way before joining the Chalkland Way. We then turn south down the Centenary way, then up to Paradise Cottages before a descent to Brubber Dale before rejoining the Wolds Way to take us back up to Fridaythorpe.



Start Time: 10am

Distance: 11 miles

Meeting Point: Bauman Lyons Walkers Shelter at The Pond, Back Street, Fridaythorpe. YO25 9RS

Booking Essential: Yes | **Cost:** Free

Contact: Beverley Tourist Information Centre, The Treasure House, Champney Road, Beverley
Tel: (01482) 391672
E: beverley.tic@eastriding.gov.uk

Additional Information:
Please bring plenty to drink and a packed lunch.

Beverley – Lairgate gossip walk

How Beverley 'modernised' and responded to change - all in one street. Local author and historian Val Wise offers a guided walk, which looks at how Beverley responded to innovation and new advances in public services: demolishing insanitary buildings and widening roads for increasing traffic, building the telephone exchange within an old house, housing wireless engineers in the Lairgate Hotel, while the Rambla Bakery owner Stanley Stephenson filmed events in the streets.



Start Time: 2pm – 4pm

Meeting Point: Kemp's Corner (the pavement island between Lairgate and North Bar, near Barclays Bank), 68 Saturday Market, Beverley, East Riding of Yorkshire, HU17 8AJ
[What3Words/// relishing.perfect.secure](https://www.what3words.com/relishing.perfect.secure)

Booking Essential: Yes | **Cost:** Free

Contact: Beverley Tourist Information Centre, The Treasure House, Champney Road, Beverley
Tel: (01482) 391672 E: beverley.tic@eastriding.gov.uk

Additional Information:
Please note there are some narrow pavements in the older parts of town with busy traffic. Please be cautious and avoid stepping onto the road.

From Field to Fork at Frith Farm

Frith Farm open day – for full details please see advert on page 12.

Migfest

Join the team at Spurn Bird Observatory for Migfest. Bird migration is one of the great wonders of the natural world and the Spurn Peninsula on Yorkshire's East Coast is arguably the best place in Britain to witness this spectacular. – Full details on page 8.

Beverley – A Dollop of Trollope walk

Anthony Trollope, the famous author, stood as a prospective MP for Beverley in 1868; find out what happened on this walk

In 1868, Anthony Trollope was one of the most famous people in the country. His reputation as a novelist had been specially sealed by his Barchester series, which is still very popular today. He also had political ambition and was selected by the Liberal Party to stand for election in one of the most notoriously corrupt seats in England - Beverley! This gentle 2 mile stroll around the town's streets explores the murky political world that Trollope found during his stay at the Beverley Arms, in the febrile campaign of 1868 - which he was to lose. The walk also discovers the key political locations from the years before Trollope, and after, starting at the centre of town political life - Saturday Market. Corruption, arson, drunkenness drugs and bribery, will be our companions.



heritage open days



Start Time: 11am – 12noon

Meeting Point: Market Cross, Saturday Market. Beverley, HU17 8BB

Booking Essential:
Yes from 1st August

Cost:
Free

Contact: Beverley Tourist Information Centre, The Treasure House, Champney Road, Beverley Tel: (01482) 391672 E: beverley.tic@eastriding.gov.uk

Victorian & Edwardian Goole walk

Join Goole Civic Society for a guided walk around late Victorian and early 20th Century Goole. Learn about the architecture of Henry Bell Thorp, local celebrities including cricketer Percy Jeeves and movie star Dorothy Bartlam, and help celebrate Goole West Park's Centenary. The walk will include Goole West Park, Airmyn Road & Boothferry Road.



heritage open days



Start Time: 10:30am

Meeting Point: West Park Café, Airmyn Road, Goole. DN14 6XA

Booking Essential: Yes
Places available for 30 people.

Cost: Free

Contact: Stephen Walker Call: 07867 547932 Email: goolecivicsociety@gmail.com

Additional Information: Contact on the day – Stephen Walker. Parking available at Goole West Park Café.

Goole's Cinemas, Theatres and Clubs walk

Join Goole Civic Society for a guided walk lead by a local expert to explore the history of Goole's Cinemas, Theatres and Working Men's Clubs. The walk will cover the site of Goole's performing venues, celebrity performances and the history of performing arts in Goole.



heritage open days



Start Time: 1:30pm (90 minute tour)

Meeting Point: Lowther Hotel, Aire Street, Goole. DN14 5QW

Booking Essential: Yes
Please available for 30 people.

Cost: Free

Contact: Stephen Walker Call: 07867 547932 Email: goolecivicsociety@gmail.com

Additional Information:
Contact on the day – Stephen Walker

SUNDAY 10th SEPTEMBER

Hull Maritime Tour

Explore Hull's rich maritime history with a guided tour of the city centre. Led by a group of dedicated volunteers who are accredited White Badge tour guides, learn more about Hull and how the city has been shaped by its past, present and future. Starting at the Museum Quarter gardens we visit the future location of the Artic Corsair at North End Shipyard, Queens Gardens, the exterior of the Maritime Museum and the new location of the Spurn Lightship in Hull Marina. Other key landmarks include Blaydes House, Trinity House and Hull Marine. (PLEASE NOTE THE SHORT TOUR TAKES IN HALF THE FULL ROUTE).

Start Time: (Long Tour: 11:30am to 2pm) 1.5miles
(Short Tour: 1:30am 3pm) under 1 mile

Distance: 1.5 miles

Meeting Point: Starting at the Museum Quarter, outside Hull and East Riding Museum on High Street.

Booking Essential: Walk up bookings usually available or secure you place at www.maritimehull.co.uk/get-involved/guided-tours

Additional Information:



MONDAY 11th SEPTEMBER

Boots & Breweries walk in the Vale of Snaith

A very interesting, guided walk through the countryside, during which you will stroll through grounds of a stately home, walk alongside a lake that was the home of Yorkshire ice skating championships for many years and experience the quiet majesty of the River Aire. You will also visit TWO breweries. The well-established OLD MILL BREWERY at Snaith as well as relatively newcomer – family run – LITTLE BLACK DOG BREWERY at Carlton. At both establishments, you will receive a warm welcome, an informative presentation and a sample drink. We will round off the day with a visit to The Brewers Arms in Snaith for a delicious savoury Buffet.

Start Time: 10am to 3pm

Distance: 9 miles

Meeting Point: Snaith Station Car Park, George Street, Snaith.DN14 9HY

Booking Essential: Yes

Cost: Free

Contact: Keith Greenwood from the Vale of Snaith Action Group.
Tel: 07518 029481
Email: keith_greenwood@hotmail.com

Additional Information:
Wear comfortable, sturdy footwear.



Walking & Wine around Little Wolds Vineyard

Here's a great chance to enjoy a lovely walk using parts of the Yorkshire Wolds Way National Trail and then round it off with wine and nibbles at the fantastic Little Wold Vineyard in South Cave. Join National Trail Officer Malcolm Hodgson on a scenic walk from the vineyard towards the delightful village of Brantingham. We will have great views across to the Humber Estuary and a chance to see historic sites like All Saint's Church at Brantingham. There are a few steep ups and downs, so you will be ready to relax and have fun on return to the Little Wold Vineyard where there will be wine samples and nibbles and a chance to learn a little about the vineyard and its wines.



Start Time: 10:30 – 2pm walk. 2pm – 3:30pm talk at Little Wold Vineyard (approximately)

Distance: 6.2 miles/10k

Meeting Point: Little Wold Vineyard, South Cave. Directions provided when booking or visit www.littlewoldvineyard.co.uk

Booking Essential: Yes

Cost: £10.00

Contact: Beverley Tourist Information Centre, The Treasure House, Champney Road, Beverley, HU17 8HE. Tel: (01482) 391672
E: beverley.tic@eastriding.gov.uk

Additional Information: Please bring a pack up to eat on route. Wear sensible footwear and dress for the weather. A soft drinks option will be available for those driving on return at Little Wold Vineyard.

Tickton – a village history walk

During lock down, I and many residents of Tickton, explored our past. This was oral history explored by exchanging ideas on facebook. We uncovered many of the nearly-lost stories of our village. Let Colin Bradshaw share them with you and perhaps you can add to our knowledge?



Start Time: 6pm to 8pm

Meeting Point: Tickton Village Hall

Booking Essential: Yes

Cost: Free

Contact: Beverley Tourist Information Centre, The Treasure House, Champney Road, Beverley, HU17 8HE. Tel: (01482) 391672
E: beverley.tic@eastriding.gov.uk

Additional Information: Please wear comfortable shoes for walking.

When Beverley made a big splash

Splash! Meet at the creelers statue on Becksides, opposite the Foresters Inn. Parking recommended at the Flemingate multi-storey car park. A walk along Beverley Beck and then north along the River Hull which will outline the importance of water transport in Beverley's economic development and the important roles played by Beverley's shipbuilding and ship repair industry. We will pass by some of the remaining yards and visit the site of the major yard on the River Hull, where ship launches made a bit of a splash!



Start Time: 9:45am to 12:15pm

Meeting Point: Creelers Statue on Becksides

Booking Essential: Yes

Cost: Free

Contact: Beverley Tourist Information Centre, The Treasure House, Champney Road, Beverley, HU17 8HE. Tel: (01482) 391672 E: beverley.tic@eastriding.gov.uk

Additional Information: Please wear comfortable shoes for walking.

Beverley Minster – hidden spaces and secret places!

Hidden Spaces, Secret Places walking tour
Explore hidden spaces not normally open to the public within this magnificent church. You will be escorted up a medieval spiral staircase of 113 steps, to the rafters in the roof space. Up here, you'll be able to peer 70 feet to the church below. You'll also walk to the other end of the Minster to climb 206 steps to the top of the rarely opened west towers with stunning views across Beverley (weather permitting). Finally, moving on to our secret places, we invite you to join us for an exclusive peek of the church's 'secret garden' hidden away not far from the Minster. A green oasis with an orchard, a pond, summer house and is also a haven for wildlife.



Start Time:

Tour one: 10:30pm – 12:30noon

Tour two: 1pm – 3pm

Meeting Point: Inside the main doors of Beverley Minster. 38 Highgate, Beverley HU17 0DN

Booking Essential: Yes

Cost: £5
(festival offer)

Contact: Beverley Tourist Information Centre, The Treasure House, Champney Road, Beverley, HU17 8HE. Tel: (01482) 391672 E: beverley.tic@eastriding.gov.uk

Additional Information: Please make your own assessment of your suitability for this tour. It is not recommended for people with heart, breathing or problems with Anxiety. If you do wish to visit with your partner – why not pay a visit to the gift shop and have a cuppa whilst they climb to great heights! (Payment must be made if you wish to accompany them to the secret garden).

MONDAY 11th SEPTEMBER

Monday evening meander

Calling all Ladies who want to get back in the saddle and meet new friends! Join the Breeze ladies for a cycling event.

Join the Breeze ladies for 12 miles cycle ride on country lanes from Driffield Sports Centre to Hutton Cranswick, Hutton and back via Skerne. This is a great 1 hour ride for anyone wanting to get back in the saddle and test their capabilities.



Start Time: 6pm to last approximately 1 hour

Distance: 12 Miles

Meeting Point: Driffield Leisure Centre, Bridlington Road, Driffield. YO25 5HZ

Booking Essential: Yes

Contact: Julie Turner to book or a chat about the Breeze Ladies cycling. Tel: 07503193173 or book on www.LetsRide.co.uk search Driffield Email: ijohturner@gmail.com

Additional Information: Suitable for all bike types. We advise you wear a helmet and check the forecast to wear suitable clothing for the ride. Please bring a water bottle and make sure you have checked your tool bag has spare inner tubes, puncture repair kit, multi-tool, levers, etc. Please also check the forecast in case you require lights for the ride.

TUESDAY 12th SEPTEMBER

Beverley has talent! walk

Many people go through life without fame or fortune. Nevertheless, they make a lasting and valuable contribution to the life of a town. Using their talent, family aspirations and their business acumen they have succeeded in leaving their mark right here. Come for a stroll and find out a little bit about some of the local characters who made a difference to our town in past years.



Start Time: 6pm to 8pm

Meeting Point: Outside St Mary's Church

Booking Essential: Yes

Cost: Free

Contact: Beverley Tourist Information Centre, The Treasure House, Champney Road, Beverley, HU17 8HE. Tel: (01482) 391672 E: beverley.tic@eastriding.gov.uk

Additional Information: Please wear comfortable shoes for walking.

Beverley Minster – Hidden spaces and secret places

Full details on page 20.

Secrets of Sewerby – an outdoor History Tour

Sewerby Hall and Gardens is one of the gems of the Yorkshire coast and is renowned for its beautiful grounds and views. But, in fact, there has been human activity at Sewerby for thousands of years, long before the hall was built or the gardens laid out. This walk, led by Robert Chester the hall's education officer, is an opportunity to find out a little more about this rich history and explore the hall and grounds in the context of its wider historical and archaeological landscape. There will also be a chance to look at some relevant items from the museum handling collection. The tour will last for about an hour and a half, and will take the form of a gentle stroll around the grounds, finishing off in the orangery for tea and coffee. The tour will be suitable for anyone, including those with mobility issues, and will stick to paths or lawns with plenty of opportunity to stop and rest along the way. Enjoy the rest of the day at your leisure in the grounds.



SEWERBY HALL
AND GARDENS

Start Time: 10:30am to 12noon

Meeting Point: The Welcome Centre, Sewerby Hall and Gardens Church Lane, Sewerby, YO15 1EA

Booking Essential: Yes

Cost: £5 (special offer) including entry. Usual price £9.50

Contact: Beverley Tourist Information Centre, The Treasure House, Champney Road, Beverley, HU17 8HE. Tel: (01482) 391672
E: beverley.tic@eastriding.gov.uk

Additional Information: Enjoy a full day and use your ticket to gain entry from 9:30 to 5pm.

Iyengar Beach Yoga

Enjoy the relaxing setting of the beach and breath in the sea air whilst practicing Iyengar yoga. Iyengar Yoga focuses on three aspects: alignment, sequencing and timing. Alignment means maintaining the intended pose while respecting the body's boundaries. Organised by East Riding Councils Active Coast Team – what better way to celebrate 'Year of the Coast 2023'. Please bring an outdoor mat or towel for your comfort. Wear comfortable clothing suitable for the weather and bring a drink.



Start Time: 7:30am to 8:30am

Meeting Point: Bridlington South Cliff Beach, South Cliff Car Park, Belvedere Parade, Bridlington, YO15 3QN

Booking Essential: No, just turn up on the day

Cost: Free

More Information: Visit www.activecoast.org

Additional Information: You must be 16+ to attend this event

Walking for Health walk from Nafferton

Enjoy a leisurely paced circular walk along footpaths, bridleways, permissive paths and quiet roads from the pretty village of Nafferton. This walk is led by one of our experienced Walking for Health guides. There will be stops for drinks along the way. Walking for Health is a great way to meet up with regular local people, making new friends whilst keeping fit at the same time.



Start Time: 10:30am

Distance: 5 miles

Meeting Point: At the corner of the Mere, opposite the Church down main street in Nafferton. [///goes.bitter.strict](http://goes.bitter.strict)

Booking Essential: No, just turn up on the day

Cost: Free

Contact: Tel: 07709 880650
E: erniehoward@hotmail.com

Additional Information: If you are new to WFH, please text leader Ernie Howard with your name and turn up 15 mins early to complete registration.

Windows on Beverley walk

Join Colin Bradshaw for a very short walk within and around St Mary's church. Churches are and always have been extensively linked to the wider community. For example, the "gud wyffes" of Beverley helped raise the money to rebuild the tower when it collapsed in 1520. You will be amazed by some of the other links ranging from fire prevention and the slave trade to a chocolate maker and the theatre! You may wish to make a donation to the work of St Mary's.



Start Time: 6pm to 8pm

Meeting Point: Entrance to St Mary's Church on Hengate.

Booking Essential: Yes

Cost: Free

Contact: Beverley Tourist Information Centre, The Treasure House, Champney Road, Beverley, HU17 8HE. Tel: (01482) 391672
E: beverley.tic@eastriding.gov.uk

Additional Information: Please wear comfortable shoes for walking.

Doing good works

"Strolling from the Friary to the old Westwood Hospital we will consider how the poor, the old, the sick and the disadvantaged of Beverley were helped before the coming of the Welfare State. We will look at those local individuals who helped them- doing good works-and their motivations in doing so."



Start Time: 10am to 11:30am

Meeting Point: The Minster Steps facing Highgate.

Booking Essential: Yes

Cost: Free

Contact: Beverley Tourist Information Centre, The Treasure House, Champney Road, Beverley, HU17 8HE. Tel: (01482) 391672
E: beverley.tic@eastriding.gov.uk

Additional Information: Please wear comfortable shoes for walking.

The North Wolds Walk - Wednesday 13th & Thursday 14th

Taking in some of the most breath-taking scenery the Yorkshire Wolds has to offer, we ask you to join us for a two-day trek covering roughly 10 miles per day. This 20 mile circular walk on public rights of way passes through Millington, Great Givendale, Bishop Wilton, Kirby Underdale and Thixendale. It offers a variety of contrasting scenery from the typical grassy Wolds valleys to picturesque villages and affords impressive views from high vantage points. The North Wolds Walk cover sections from other long distance routes, including the Yorkshire Wolds Way, Chalkland Way, Minster Way and the Wold Rangers Way.



Start Time: 10am (both days)

Distance: 10 miles per day.
Total: 20 miles

Booking Essential: Yes

Cost:
£10 per person

Contact: Beverley Tourist Information Centre,
The Treasure House,
Champney Road, Beverley
Tel: (01482) 391672
E: beverley.tic@eastriding.gov.uk

Day One

Our walk starts in the pretty village of Millington in the heart of the Yorkshire Wolds before joining a section of the Minster Way to Great Givendale, home of St Ethelburga's church which overlooks a small lake at the head of the dale. The route then opens to give fine elevated views over the Vale of York before the descent to Bishop Wilton, tucked away in the folds of the hills with a stream running through the heart of the village. From here we proceed through the Garrowby Estate, owned by the Earl of Halifax, across the A166 and head down towards Kirkby Underdale. There follows a steep ascent up to Northdale Plantation before a gentle descent through Milham Dale and along to Thixendale.

Meeting Point: Outside St Mary's Church. Please park your vehicle responsibly in the village of Thixendale.

Address: St Mary's Church, Thixendale. YO17 9TG

What3words: \\\
otherwise.gets.games

Day Two

Starting in Thixendale and following part of the Yorkshire Wolds Way along Thixen Dale Wold, we pass through a pretty V shaped valley before reaching 'Time and Flow' a dramatic spiral earthwork and part of the Yorkshire Wolds Way WANDER project where we will be stopping for a quick coffee. After passing through pretty Wayrham Dale, we cross over the A166. From here we slowly descend southwards through the Great Plantation a wooded area with plenty of wildlife before the southern end opens up into a lovely grassy dale. Following the route into Frenal Dale we follow the chalk valley to join the Yorkshire Wolds Way above Millington Pastures. This section of the Yorkshire Wolds Way has some steep ascents and descents affording great views over the Wolds on before reaching an elevated viewpoint over the village of Millington. A short steep descent follows to the village where interested parties can join us for celebration refreshments in the Ramblers Rest Tea Rooms. (paid for separately)

Meeting Point: Please park your vehicle along the grass verge at the Church in Millington.

Address: St Margaret's Church, Millington. YO42 1TX

What3words: \\\
greyhound.running,
detective

Additional Informaton:
Please bring a packed lunch and plenty to drink.

A Withernsea Wander

Join the Windmill walkers for a pleasant walk starting and finishing at the seaside town of Withernsea. The walk takes us from the Lighthouse, inland along the Rimswell Valley to the village of Rimswell. Notably the walk will cross the Greenwich Meridian crossing from East to West and back! On our return there will be a complimentary visit to the Lighthouse museum. Take the 144 steps to the top of the Lighthouse for breath taking views of the Holderness coastline – on a clear day you can even see the Humber Bridge! The museum also houses local RNLi and Coastguard history, with exhibits charting Withernsea's wartime past and memorabilia belonging to Kay Kendall – Withernsea's most famous film star! A light lunch can be purchased in the Lighthouse café or a pack up can be enjoyed in the tranquil gardens. The Windmill walkers are a friendly walking group formed in Skidby with over 70 members and a packed programme of walks. Scan the QR code to find out more.



Start Time: 10am

Distance: 5.7 miles

Meeting Point: Withernsea Lighthouse, 47 Hull Rd, Withernsea, HU19 2DY
GR: TA 339 279
What3Words:/// stylist.flats.spurtd

Booking Essential: Yes **Cost:** Free

Contact: Beverley Tourist Information Centre, The Treasure House, Champney Road, Beverley, HU17 8HE. Tel: (01482) 391672
E: beverley.tic@eastriding.gov.uk

Additional Information: Parking available at the nearby Hull Road car park and readily available street parking. WC facilities available at the start and end of the walk. The walk will take about 2-2.5 hours including a stop for coffee (not provided).

Boat Cruise on Pocklington Canal

Join Volunteers from the Pocklington Canal Amenity Society aboard the New Horizons narrowboat. Enjoy the tranquillity of this rural canal and spot wildlife along the way. Experience operating a lock, and have a go at steering the boat. Bring a packed lunch or snack. Tea and Coffee will be served on the boat. (Please be advised that in the event of prolonged dry weather leading up to this event, resulting in low water levels - this event will be cancelled. Attendees will be contacted the day before with a full refund issued).



Start Time: Cruise one – 11am to 1:30pm

Meeting Point: Melbourne Arm Moorings, Melbourne. Near Pocklington. YO42 4QJ

Booking Essential: Yes **Cost:** £7.50 per person

Contact: Beverley Tourist Information Centre, The Treasure House, Champney Road, Beverley, HU17 8HE. Tel: (01482) 391672
E: beverley.tic@eastriding.gov.uk

Additional Information: Toilet facilities available at the start and end of the trip (at the moorings). Please park responsibly in the village and walk down the lane at the side of the pub (200 yards approximately).

The Battle of Stamford Bridge – a walk, talk and tapestry viewing

We have all heard of the 'Bayeux Tapestry' but closer to home – we have our very own which is just as impressive! Join us for a short walk and history talk about the Battle of Stamford Bridge – which took place on 25th September 1066 when the Saxons defeated the Vikings. Our walk takes us to the location of the great battle where a monument stands today, along to the old corn mill, across the stone bridge and along the railway viaduct before returning to the Platform 66 Heritage Centre where we can enjoy a private viewing of the Stamford Bridge Tapestry. Learn how the tapestry came about and how it was stitched whilst enjoying tea, coffee and cake.



The Old Station Club

Start Time: 1:30pm – 3:30pm

Distance: 2 miles

Meeting Point: The Old Station Club, 24 Church Road, Stamford Bridge. YO41 1DG (Parking available)

Booking Essential: Yes

Cost: Free

Contact: Beverley Tourist Information Centre, The Treasure House, Champney Road, Beverley, HU17 8HE. Tel: (01482) 391672
E: beverley.tic@eastriding.gov.uk

Additional Information: In the event of bad weather – the group will have the option to enjoy the talk, tapestry and tea without the walk! There are a number of lunch options around Stamford Bridge including: The Balloon Tree Farm Shop and Café; No.10 Bistro and The Square Bakehouse.

Energising Beach Yoga

Breathing in the sea air has many health benefits that are particularly enhanced by yoga. Your body can actually absorb oxygen easier thanks to the negative ions that are present in the ocean air. These negative ions can help naturally boost your serotonin, which can help you feel more relaxed and happier. Organised by East Riding Councils Active Coast Team – what better way to celebrate 'Year of the Coast 2023'. Please bring an outdoor mat or towel is for your comfort. Wear comfortable clothing suitable for the weather and bring a drink.



YEAR OF THE
Coast
2023



Start Time: 7am to 8am

Meeting Point: Withernsea Beach, Pier Towers, HU19 2JS

Booking Essential: No, just turn up on the day

Cost: Free

More Information: Visit www.activecoast.org

Additional Information: You must be 16+ to attend this event. A Yoga mat or towel is recommended for this outdoor activity and participants are advised to wear comfortable clothing and bring a drink

Syntan – a Heritage Visit

A talk 'on-board' this historic industrial barge. Built in 1949 at Hepworth shipyard in Paull for Richard Hodgson & Sons tannery, Flemingate. Syntan is one of a fleet of 16 barges which transported raw materials and goods to and from the Port of Hull and the industries that lined Beverley Beck. Restored in the early 2000s Syntan is a working reminder of Beverley's busy industrial past and contains a visitor centre with many photos and artefacts from her glorious years. The talk will take you through the industries that existed around Beckside and the important trading connections from Beckside through the Port of Hull out to the rest of the world. You will obtain a glimpse of how the barges were also a home for the workers and their families whilst undergoing their trips. The Beverley Barge Preservation Society recovered and restored Syntan barge and now also operates two other vessels, Sun and Mermaid berthed next to Syntan.



Start Time: 5:30pm to 7pm

Meeting Point: Meet outside the gangway to Syntan (by the restored cane). Located on Beckside, Cranehill Wharf, Scaife Mews, Beverley. HU17 0GG. Ten minutes before the start time please.

Booking Essential: Yes

Cost: Free

Contact: Beverley Tourist Information Centre, The Treasure House, Champney Road, Beverley, HU17 8HE. Tel: (01482) 391672
E: beverley.tic@eastriding.gov.uk

Fred Elwell - a walk around his life and times

Join local historian Val Wise on this gentle walk around Beverley. There are copies of more than 20 of Fred Elwell's paintings displayed in the streets of Beverley. Join Val Wise on a guided tour around Beverley to look at some people, places and paintings linked to the Ewell family. The walk concludes at Bar House, Fred's home for 44 years. This walk takes you around the town with frequent crossing of roads.



Start Time: 2pm – 3:30pm

Meeting Point: Old Clock Tower, Railway Square. Opposite the Railway Station, Armstrong Way, Beverley, East Yorkshire
What3Words/// promotion.wicket.square

Booking Essential: Yes from 1st August

Cost: Free

Contact: Beverley Tourist Information Centre, The Treasure House, Champney Road, Beverley Tel: (01482) 391672
E: beverley.tic@eastriding.gov.uk

Beverley – A Dollop of Trollope walk

Anthony Trollope, the famous author, stood as a prospective MP for Beverley in 1868; find out what happened on this walk. In 1868, Anthony Trollope was one of the most famous people in the country. His reputation as a novelist had been specially sealed by his Barchester series, which is still very popular today. He also had political ambition and was selected by the Liberal Party to stand for election in one of the most notoriously corrupt seats in England - Beverley! This gentle 2 mile stroll around the town's streets explores the murky political world that Trollope found during his stay at the Beverley Arms, in the febrile campaign of 1868 - which he was to lose. The walk also discovers the key political locations from the years before Trollope, and after, starting at the centre of town political life - Saturday Market. Corruption, arson, drunkenness drugs and bribery, will be our companions.



heritage open days



Start Time: 6pm

Meeting Point: Market Cross, Saturday Market, Beverley, HU17 8BB

Booking Essential: Yes **Cost:** Free

Contact: Beverley Tourist Information Centre, The Treasure House, Champney Road, Beverley, HU17 8HE. Tel: (01482) 391672 E: beverley.tic@eastriding.gov.uk

The Alta Via walk

In much of central Beverley one can still find the medieval street pattern, none more so than the "Alta Via", the High Street extending from Beverley Minster to North Bar. Peter Bonner will take you along the Alta Via from the Minster, stopping at Wednesday Market, Toll Gavel, Register Square, Saturday Market and North Bar Within. He will suggest how things would have looked at the time and how much of Beverley's past remains or has been adapted and modified over the centuries. We will be going to the heart of Beverley's history!



WALKING THE TOWN

Start Time: 9:45am to 11:45am

Meeting Point: The North Doors of the Minster

Booking Essential: Yes **Cost:** Free

Contact: Beverley Tourist Information Centre, The Treasure House, Champney Road, Beverley, HU17 8HE. Tel: (01482) 391672 E: beverley.tic@eastriding.gov.uk

Additional Information: Please wear comfortable shoes for walking.

The North Wolds Walk

Full details on page 24.

Between the Vines at Laurel Vines Vineyard

Laurel Vines is a multi-award winning, family run vineyard and winery in the heart of East Yorkshire within the hamlet of Aike. This event is a great opportunity to visit the vineyard at harvest time and see how award-winning wine is produced from our East Yorkshire soil. Visitors will be taken on a full vineyard and winery tour including a mini wine tasting session. We finish off with a homemade sandwich and the chance to buy some of the vineyards award winning wine. Lunch preferences to be taken on booking.



Start Time: 11am to 2pm

Meeting Point: Ample parking at Laurel Farm, Aike, Driffield, East Riding of Yorkshire, YO25 9BG.

Booking Essential: Yes

Cost: £10

Contact: Beverley Tourist Information Centre, The Treasure House, Champney Road, Beverley, HU17 8HE. Tel: (01482) 391672
E: beverley.tic@eastriding.gov.uk

Additional Information: Laurel Vines Vineyard in Aike is located on the Minster Way walk from Beverley to York. For those who do not wish to drive and take advantage of the wine tasting – please scan the QR code below to walk to the event which is approximately 3 miles from Beverley.

Out with the old and in with the new

From 1120 to 2022. On this walk Carli Black will take you to the heights of Beverley – quite literally! Starting with a stunning viewpoint (weather permitting) giving you probably the best view in the East Riding, from St Mary's tower. You will need a head for heights and good mobility as you ascend the tower using narrow steps. Leaving this vantage point we will walk through Beverley, forward in time, covering a millennium of history as we walk. We will then have the privilege of viewing Beverley Minster from the latest spectacular viewpoint, the Conference Room, at the East Riding College. John Doris (Former Vice Principal) has invited us to join him to hear about the development of college on the historic Flemingate site.



Start Time: 6pm to 8pm

Meeting Point: St Mary's church gates, North Bar Within

Booking Essential: Yes

Cost: Free

Contact: Beverley Tourist Information Centre, The Treasure House, Champney Road, Beverley, HU17 8HE. Tel: (01482) 391672
E: beverley.tic@eastriding.gov.uk

Additional Information: Please wear comfortable shoes for walking.

Hull Maritime Tour

Explore Hull's rich maritime history with a guided tour of the city centre. Led by a group of dedicated volunteers who are accredited White Badge tour guides, learn more about Hull and how the city has been shaped by its past, present and future. Starting at the Museum Quarter gardens we visit the future location of the Artic Corsair at North End Shipyard, Queens Gardens, the exterior of the Maritime Museum and the new location of the Spurn Lightship in Hull Marina. Other key landmarks include Blaydes House, Trinity House and Hull Marine.



Start Time: 10:30am to 1pm

Distance: 1.5 miles

Meeting Point: Starting at the Museum Quarter, outside Hull and East Riding Museum on High Street.

Booking Essential: Walk up bookings usually available or secure you place at www.maritimehull.co.uk/get-involved/guided-tours

Additional Information:



Beach Yoga for Hip Mobility

Take advantage of East Yorkshires coast line and enjoy a session of Beach Yoga whilst breathing in the sea air and enjoying the tranquility of your surroundings. Organised by East Riding Councils Active Coast Team – what better way to celebrate 'Year of the Coast 2023'. Please bring an outdoor mat or towel is for your comfort. Wear comfortable clothing suitable for the weather and bring a drink.



Start Time: 10am to 11am

Meeting Point: Hornsea Morrow Avenue, 57 Esplanade, Hornsea. HU18 1NQ

Booking Essential: No, just turn up on the day

Cost: Free

More Information: Visit www.activecoast.org

Additional Information: You must be 16+ to attend this event. A Yoga mat or towel is recommended for this outdoor activity and participants are advised to wear comfortable clothing and bring a drink

THURSDAY 14th SEPTEMBER

Monumental Ride!

Calling all Ladies who want to get back in the saddle and meet new friends! Join the Breeze Ladies for a cycling event. If you are happy to ride at night, this is a slightly longer route than the Monday evening ride.!

A tried and tested route out to Nafferton, Wansford, Skerne, Hutton and straight back to Driffeld. It is essential you wear hi-vis clothing and make sure you have working lights fitted and extra lights on board should your lights fail during the ride.



Start Time: 6pm to last approximately 1 hour

Distance: 16 Miles

Meeting Point: Driffeld Leisure Centre, Bridlington Road, Driffeld. YO25 5HZ

Booking Essential: Yes

Contact: Julie Turner to book or a chat about the Breeze Ladies cycling. Tel: 07503193173 or book on www.LetsRide.co.uk search Driffeld
Email: ijohturner@gmail.com

Additional Information: Suitable for all bike types. We advise you wear a helmet and check the forecast to wear suitable clothing for the ride. Please bring a water bottle and make sure you have checked your tool bag has spare inner tubes, puncture repair kit, multi-tool, levers, etc. Please also check the forecast in case you require lights for the ride.

FRIDAY 15th SEPTEMBER

Cover the Coast: Fossil Hunt Walk

Celebrate 'year of the coast 2023'. Join one of our guided Fossil Walks to find your own Jurassic fossil. This 4 hour session will take place entirely outdoors, where you will head straight onto the beach to hunt for fossils with your Guide.



YEAR OF THE
Coast
2023



Start Time: 10am to 2pm (timings may vary depending on speed of walkers)

Meeting Point: Meet at Mappleton Beach Car Park, 4 Cliff Lane, Mappleton, Hornsea, HU181XX

Booking Essential: Yes

Cost: Free

Contact: www.activecoast.org

Additional Information: Age 16+ only. Participants are advised to wear comfortable, waterproof clothing and sturdy shoes for this outdoor activity alongside bringing a packed lunch and water to drink throughout the day.

Walking with the Aristocrats at the Carlton Towers Estate

Following on from a successful event in 2022 - Join us again for a splendid walk from the Historic market town of Snaith to the Carlton Towers Estate – an exquisite stately home with a long and distinguished history! Led by Snaith walkers are welcome group, we walk from Snaith, viewing the old toll bridge and along the Carlton estate passing the lake before getting our first view of this impressive stately home. On arrival at Carlton Towers we enjoy scones and a delicious cup of tea in the banqueting hall before taking a step back in time with a guided tour of this wonderful stately home as featured on 'keeping up with the aristocrats'. This includes the staterooms, drawing rooms, armoury and bedrooms including the unique "Priests Hiding Hole". Lunch can be purchased after the event at the Stable Tearoom which overlooks the walled garden and vineyard. Walking to the estate is encourage. However, please advise us if you are unable to do this and would prefer to meet the group at the venue.



Start Time: 10am from Snaith
11am at Carlton Towers

Distance: 2.28 miles

Meeting Point: Snaith Railway Station. George Street. Snaith DN14 9HY.
Carlton Towers: High St, Carlton,
Goole DN14 9LZ

Booking Essential:
Yes

Cost: £10 including entrance to Carlton Towers - tea/coffee and scones. (Please advise of any intolerances when booking).

Contact: Beverley Tourist Information Centre,
The Treasure House, Champney Road,
Beverley, HU17 8HE. Tel: (01482) 391672
E: beverley.tic@eastriding.gov.uk

Additional Information: The walk back to Snaith will be at your leisure. Either taking the route we arrive on, or the slightly quicker route - walking along the roadside footpath back to snaith. Kindly let by the Vale of Snaith Action Group on behalf of the Walking East Yorkshire Festival.

Quiet Gardens of Beverley

The 10 different gardens we visit on the walk each have their own histories. Who do we have to thank for their existence? Stories about the gardens include fires and fights, a gas chamber, ghosts and even earthquakes.



Start Time: 2pm to 4pm

Meeting Point: Library Gardens in
Champney Road

Booking Essential: Yes

Cost: Free

Contact: Beverley Tourist Information Centre,
The Treasure House, Champney Road,
Beverley, HU17 8HE. Tel: (01482) 391672
E: beverley.tic@eastriding.gov.uk

Additional Information: Please wear sensible shoes for walking.

FRIDAY 15th SEPTEMBER

When we made a big splash – ship building walk

Splash! Meet at the creelers statue on Becksde, opposite the Foresters Inn. Parking recommended at the Flemingate multi-storey car park. A walk along Beverley Beck and then north along the River Hull which will outline the importance of water transport in Beverley's economic development and the important roles played by Beverley's shipbuilding and ship repair industry. We will pass by some of the remaining yards and visit the site of the major yard on the River Hull, where ship launches made a bit of a splash!



Start Time: 9:45am to 12:15pm

Meeting Point: Creelers Statue on Becksde

Booking Essential: Yes

Cost: Free

Contact: Beverley Tourist Information Centre, The Treasure House, Champney Road, Beverley, HU17 8HE. Tel: (01482) 391672
E: beverley.tic@eastriding.gov.uk

Additional Information: Please wear comfortable shoes for walking.

SATURDAY 16th SEPTEMBER

Mary Wollstonecraft walk

Mary Wollstonecraft lived in Beverley between 1768 and 1774. She became a writer and espoused women's rights, influencing opinion here and abroad. Did her time in Beverley have any influence on her views? She was here when the town was attracting professional middle classes seeking fashionable housing often provided by builders such as William Middleton.



Start Time: 2pm – 4pm

Meeting Point: Wednesday Market, opposite No 2 Highgate

Booking Essential: Yes

Cost: Free

Contact: Beverley Tourist Information Centre, The Treasure House, Champney Road, Beverley, HU17 8HE. Tel: (01482) 391672
E: beverley.tic@eastriding.gov.uk

Additional Information: Please wear comfortable shoes for walking.

Nordic Walking with JLS at North Cave Wetlands

Experienced Nordic Walkers are invited to join British Nordic Walking Instructors for a 6-mile Nordic Walk in the countryside around North Cave and Hotham. Nordic Walking is a weight bearing exercise which uses up to 90% of the body's muscles and great for helping people get fitter, stronger and improving general physical and mental wellbeing.

If you can't make the event but would like to Nordic Walk with us please email: jlsnordicwalking@gmail.com for more details of our free introductory and weekly walking sessions.



Start Time: 10am

Distance: 6 Miles

Meeting Point: Car Park at North Cave Wetlands Nature Reserve, Dryham Lane, HU15 2LY

Booking Essential: Yes

Cost: Free

Contact: Louise Mukerjea T: 07957 590189, E: jlsnordicwalking@gmail.com

Additional Information: No Dogs or children under 18. Everyone is required to complete a short online health questionnaire prior to the session. Comfortable flexible walking/ trail shoes are ideal. Nordic Walking poles will be provided to use - Please arrive 15 Minutes early to be fitted*. Café and refreshments kiosk open most days.

Hull Maritime Tour

Explore Hull's rich maritime history with a guided tour of the city centre. Led by a group of dedicated volunteers who are accredited White Badge tour guides, learn more about Hull and how the city has been shaped by its past, present and future. Starting at the Museum Quarter gardens we visit the future location of the Arctic Corsair at North End Shipyard, Queens Gardens, the exterior of the Maritime Museum and the new location of the Spurn Lightship in Hull Marina. Other key landmarks include Blaydes House, Trinity House and Hull Marine.



Start Time: 10:30am to 1pm

Distance: 1.5 miles

Meeting Point: Starting at the Museum Quarter, outside Hull and East Riding Museum on High Street.

Booking Essential: Walk up bookings usually available or secure you place at www.maritimehull.co.uk/get-involved/guided-tours

Additional Information:



SATURDAY 16th SEPTEMBER

Fiddlers on the route!

Calling all Ladies who want to get back in the saddle and meet new friends! Join the Breeze ladies for a cycling event.

From Driffield Leisure Centre we will head through Hutton, Southburn and Lund; cycling along some lovely undulating lanes all the way to Goodmanham. We will stop off at the The 'Fiddle Drill' in the village. We will return to Driffield via South Dalton. As with all our rides there will always be a Breeze Champion at the start venue. Should we have to cancel the ride due to adverse weather conditions or updated Government or British Cycling guidelines, we will endeavour to inform all registered participants beforehand.



Start Time: 10am to last approximately 4hrs 45 minutes

Distance: 41 Miles

Meeting Point: Driffield Leisure Centre, Bridlington Road, Driffield. YO25 5HZ

Booking Essential: Yes

Cost: Free

Contact: Julie Turner to book or a chat about the Breeze Ladies cycling. Tel: 07503193173 or book on www.LetsRide.co.uk search Driffield Email: ijohturner@gmail.com

Additional Information: Suitable for all bike types. As you know, we always advise you wear a helmet and please remember to check the forecast before the ride and wear suitable clothing for the day. Please bring a water bottle and don't forget to make sure you have enough tools and spares inner tubes, should you be unfortunate enough to have a puncture or technical problem en route.

SUNDAY 17th SEPTEMBER

E-Bikes cycling between Hornsea and Burton Constable

Enjoy a fabulous day out on the old rail trail between Hornsea and Burton Constable Hall and Grounds. Your journey starts in seaside town of Hornsea where you pick up an electric bike before setting off along the rail trail to the magnificent Burton Constable Hall and Grounds. The journey will take you approximately 9 miles on this off-road track along the trail and some quiet roads before reaching your destination. Shark e-bikes will provide you with a simple map showing your route. Once at Burton Constable you will have the opportunity to have lunch in the Stable café, enjoy the many trails and parkland and visit the Hall which has thirty rooms filled with fine furniture, paintings, sculptures, and country-house paraphernal.

E-bikes are great fun! and this is a fantastic way to have a go for anyone is considering buying one in the future. Your e-bike will have approximately 30 miles of electricity – so it's entirely up to you how much pedalling you want to do!

All eBike riders must be over 14. Childrens bikes are available for hire, but will not include free entrance to the hall.



Start Time: Pick up your bike between 9am and 11am. Bikes returned by 4.30pm

Location: Hornsea to Burton Constable

Meeting Point: Shark e Bikes, Unit 5 Southgate, Old Bridge Rd, Hornsea HU18 1RP

Booking Essential: Yes

Cost: £36
A refundable deposit of £250 and photo ID are required.

Contact: Hello@sharkebikes.com
0560 364 3858/ 07308 967333

Additional Information: Your ticket includes hire of your electric bike and helmet. Entrance to Burton Constable Hall and Gardens.

Wild Food Foraging Walk - WILD HARVEST SCHOOL OF SELF RELIANCE

Join Wild Harvest tutor Di Hammill Page for a stroll along the picturesque canal Near East Cottingwith. We will start with an introduction to foraging talk, with all the essential information you should not be foraging without, such as the legal aspects, how to avoid death etc! Don't worry we give you a four step process to ensure you are foraging safely and sustainably. Then we will walk along the canal and meet around 20 edible wild plants, and Di will give you lots of information about how to harvest and process them together with health benefits and cautions. Di is a member of the Association of Foragers having taught for 17 years, initially for the forestry commission and National Parks centres. Some of the plants and trees Di hopes to show you there will be Meadowsweet, silverweed, willowherb, plantain, burdock, ash, oak as well as lots of common plants that many people know, but don't often realise you can eat... what other wild edibles will we meet I wonder...?



Start Time: 2:30pm to 4:30pm

Distance: 2 miles approximately

Meeting Point: East Cottingwith Village Hall, YO42 4TZ. No loo is available in the village, but Wild Harvest is just a one minute drive from the village so a toilet stop can be made after the event at Boundary Farm, East Cottingwith. YO42 4TA or visit the Pig in the Willow Café in East Cottingwith for refreshments after the walk.

Booking Essential: Yes

Cost: Adult (£7.50)
Child (Free)

Contact: Beverley Tourist Information Centre, The Treasure House, Champney Road, Beverley, HU17 8HE. Tel: (01482) 391672
E: beverley.tic@eastriding.gov.uk
Online via Wild Harvest.
<https://bit.ly/3tBNQC1>

Additional Information: Well behaved dogs on leads are welcome. The path is suitable for an all-terrain type of pushchair. Please wear comfy shoes, warm clothing and waterproof if necessary.

Millington and the Chalkland Way

A classic circular walk in the Yorkshire Wolds from the pretty village of Millington, past Warren Farm & along the Wilberforce/ Chalkland Way to Kilnwick Percy – home of the Madhymaka Kadampa Meditation Centre. Then on to Pocklington Woods and crossing Broad lngs on route back to Millington. There will be a snack break and a picnic lunch stop.



Start Time: 10am

Distance: 7.5 miles

Meeting Point: Please park your vehicle along the grass verge at the Church in Millington. Address: St Margaret's Church, Millington. YO42 1TX
what3words: \\\ \ greyhound.running.detective

Booking Essential: Yes

Cost: Free

Contact: Beverley Tourist Information Centre, The Treasure House, Champney Road, Beverley, HU17 8HE. Tel: (01482) 391672
E: beverley.tic@eastriding.gov.uk

Bridlington Southshore to Boynton and back! walk

From the start we immediately head down the road for a bracing southerly walk along the beach (subject to tide) before heading inland along quiet road and fields towards Bessingby, passing by the church towards the main A614 road. Walking a short stretch along the main road footpath we then head towards Carnaby and a coffee stop in the grounds of the church in the village. There follows a delightful stretch of walking over minor road, fields, glades and woodland before our lunch stop as we approach Boynton. Passing by the church we then make a short ascent for a splendid view of Boynton Hall. Leaving Boynton behind we then traverse fields and minor road eventually rewarded by a panoramic view of Bridlington. We then head back into Bridlington once again passing Bessingby. Tea and cakes may then be taken by those who wish to do so in the cafe at the Spa Theatre. What better way to celebrate the year of the coast!

Start Time: 10am

Distance: 12 miles

Meeting Point: Bridlington Promenade. Opposite the junction of Shaftesbury Road. YO15 3NN
 What3Words/// gates.fears.unafraid

Booking Essential: Yes **Cost:** Free

Contact: Beverley Tourist Information Centre, The Treasure House, Champney Road, Beverley, HU17 8HE.
 Tel: (01482) 391672
 E: beverley.tic@eastriding.gov.uk

Additional Information: Please bring plenty to drink and a packed lunch.



Yorkshire Wolds Way – Family Geocaching Trail

This is a great circular walk for all the family, with GPS treasure hunting along the way. Find all the Geocaches, record your finds and unscramble the word to complete the challenge. Enjoy this gentle walk along a popular stretch of the Yorkshire Wolds Way, taking in the disused railway line and the picturesque village of Goodmanham. (It is recommended that each group should have a maximum of 5 members, which must include at least one adult).

Start Time: Please drop in ANYTIME between 10am and 2pm, allowing 1.5 – 2 hours for your walk.

Distance: Approximately 2.5 miles and will take you approximately 1.5/2 hours to complete.

Meeting Point: Aspen Close Play Area, Aspen Cl, Market Weighton, York YO43 3BB
 SE 87811 41976 What3Words
 ///takes.inversion.patting. Parking is available at the car park in the market place.

Booking Essential: Yes
www.bridspa.com/events

Cost: £5 per group (plus £10 refundable cash deposit on the day, for the loan of GPS)



Market Weighton Story Walk

Who were Edwin, William and Helen and why are they so important to Market Weighton? Hull Storytellers explain through stories of legend and mystery. Walk along the disused railway line, fields and paths to Goodmanham, where in AD627 King Edwin of Northumbria was converted to Christianity. Passing the Rifle Butts nature reserve, we come to St Helen's Well, a holy site since before Roman times. Ribbons and coins are still left here by modern pilgrims... Last but by no means least, Giant William Bradley (1797-1830), the tallest ever Englishman, whose remains lie in All Saints Church, but whose memory is kept alive by the life size statue overlooking the car park!



**Hull
Storytellers**



Start Time: 11am – 3pm approximately

Distance: 4.2 Miles

Meeting Point: Market Hill Car Park, Londesborough Road, Market Weighton. YO43 3AP (Underneath the black arch at the entrance to the carpark - Look for a red jacket!)

Booking Essential: Yes

Cost: Free

Contact: Elaine: 07741 453526
elainetague@gmail.com Roslyn: 07950 185019
roslynmary11@gmail.com

Additional Information: Toilets opposite car park on Londesborough Road. Please bring a picnic and drinks to eat on route.

Hull Maritime Tour

Explore Hull's rich maritime history with a guided tour of the city centre. Led by a group of dedicated volunteers who are accredited White Badge tour guides, learn more about Hull and how the city has been shaped by its past, present and future. Starting at the Museum Quarter gardens we visit the future location of the Artic Corsair at North End Shipyard, Queens Gardens, the exterior of the Maritime Museum and the new location of the Spurn Lightship in Hull Marina. Other key landmarks include Blaydes House, Trinity House and Hull Marine. (PLEASE NOTE THE SHORT TOUR TAKES IN HALF THE FULL ROUTE).



YEAR OF THE
Coast
2023

Start Time: (Long Tour: 11:30am to 2pm) 1.5miles
(Short Tour: 1:30am 3pm) under 1 mile

Meeting Point: Starting at the Museum Quarter, outside Hull and East Riding Museum on High Street.

Booking Essential: Walk up bookings usually available or secure you place at www.maritimehull.co.uk/ get-involved/ guided-tours

Additional Information:



Stoned in Beverley

Did you know that a range of different rocks can be found in the town? Explore Beverley's geology with Colin Bradshaw. We can find rocks from Wales, Scotland and even Norway. More local rocks tell us a story of tropical seas and early life. You will never look at Beverley's buildings in the same way again. This walk relates rocks to architecture. We will be keeping to pavements in the town so it should be suitable for wheelchair users. The walk will finish at the Treasure House where you can get a drink in the cafe and perhaps visit the museum which has a small local geology display.



Start Time: 10:00am to 11:30pm

Meeting Point: The Minster Steps facing Highgate.

Booking Essential: Yes

Cost: Free

Contact: Beverley Tourist Information Centre, The Treasure House, Champney Road, Beverley, HU17 8HE. Tel: (01482) 391672 E: beverley.tic@eastriding.gov.uk

Additional Information: Please wear comfortable shoes for walking.

Lairgate Gossip

Take this new walk with local author and historian Val Wise, which looks at how Beverley responded to innovation and new advances in public services: demolishing insanitary buildings and widening roads for increasing traffic, building the telephone exchange within an old house, planting wireless engineers in the Lairgate Hotel, while the Rambla Bakery owner Stanley Stephenson filmed events in the streets.



Start Time: 2pm to 4pm

Meeting Point: Kemps corner (pavement between Lairgate and North Bar Within) Beverley

Booking Essential: Yes

Cost: Free

Contact: Beverley Tourist Information Centre, The Treasure House, Champney Road, Beverley, HU17 8HE. Tel: (01482) 391672 E: beverley.tic@eastriding.gov.uk

Wassand – a Regency Hall and Woodland Walk

Wassand Hall is a fine Regency House in beautiful tranquil surroundings between Seaton and Hornsea. The Estate has been in one family ownership since 1520 and retains a friendly atmosphere. Join us on the bird hide walk through an ancient forest led by our bird hide warden or explore the woodlands and arboretum. We shall also take a tour of the Hall containing a collection of 18th and 19th century paintings, English and European Silver, furniture and porcelain. Finishing off with Tea and Cake in the walled garden.



Start Time: 1:30pm finishing at 3:45pm

Meeting Point: Wassand Hall, A1035 (formerly B1244) between Seaton and Hornsea. HU11 5RJ

Booking Essential: Yes

Cost: £7.50

Contact: Beverley Tourist Information Centre, The Treasure House, Champney Road, Beverley, HU17 8HE. Tel: (01482) 391672 E: beverley.tic@eastriding.gov.uk

Additional Information: Please wear suitable footwear for the walk.

Beverley Minster – Hidden spaces and secret places

Full details on page 20.

Mary Wollstonecraft

Mary Wollstonecraft lived in Beverley between 1768 and 1774. She became a writer and espoused women's rights, influencing opinion here and abroad. Did her time in Beverley have any influence on her views? She was here when the town was attracting professional middle classes seeking fashionable housing often provided by builders such as William Middleton.



Start Time: 2pm – 4pm

Meeting Point: Wednesday Market opposite 2 Highgate

Booking Essential: Yes

Cost: Free

Contact: Beverley Tourist Information Centre, The Treasure House, Champney Road, Beverley, HU17 8HE. Tel: (01482) 391672 E: beverley.tic@eastriding.gov.uk

Additional Information: Please wear comfortable shoes for walking.

The Chalkland around Warter Walk

A circular walk in the chalk hills and the dry valleys of the Yorkshire Wolds: Back in time from David Hockney, the history of the Warter Priory Estate, the medieval Priory, the archaeology of the Roman and Iron Age periods, the last glacial maximum and then to the chalk seas of 90 million years ago. Hear of the plans for a UNESCO Geopark for East Yorkshire.



Start Time: 10:30am – 3:30pm

Distance: 8 Miles

Cost: Free

Meeting Point: Yorkshire Wolds Heritage Centre, St James' Church, Warter

Contact: Beverley Tourist Information Centre, The Treasure House, Champney Road, Beverley, HU17 8HE. Tel: (01482) 391672 E: beverley.tic@eastriding.gov.uk

Additional Information: Bring boots, waterproofs and packed lunch Refreshments afterwards at the Heritage Centre

Yoga and Breathwork Workshop

Join our qualified instructor for a Yoga and Breathwork Workshop at the Humber Bridge Country Park. The Humber Bridge Local Nature Reserve is a haven for people and wildlife set amongst woods, meadows, ponds and cliffs.



Start Time: 10am – 12pm

Meeting Point: Second Grassy Meadow, Humber Bridge Country Park, Cliff Road, Hessle Foreshore, Hessle, HU13 0HB

Booking Essential: No, just turn up **Cost:** Free

Contact: www.activecoast.org

Additional Information: Age 16+ only. A Yoga mat or towel is recommended for this outdoor activity and participants are advised to wear comfortable clothing and bring a drink.

The Age of Change

The area around North Bar reflects how the town has changed since the advent of the Georgian period. What are the changes that we can see in the life and times of this fashionable area of Beverley? Take a stroll with Carli Black and find out who lived in some of the houses when they were still quite new and now so lovingly conserved and updated. The lives and work of the residents give us a glimpse of life during a time of great change and advancement.



Start Time: 6pm to 8pm

Meeting Point: Outside St. Mary's Church, North Bar Within.

Booking Essential: Yes **Cost:** Free

Contact: Beverley Tourist Information Centre, The Treasure House, Champney Road, Beverley, HU17 8HE. Tel: (01482) 391672 E: beverley.tic@eastriding.gov.uk

Additional Information: Please wear comfortable shoes for walking.

Tipsters, Tricksters and the Odd nag – a walk linked to Beverley racecourse

Horse racing has taken place in Beverley since the middle of the 18th Century and, over the years, the town has been at the centre of many an episode of equine triumph and disaster. In a walk which begins in the centre of Beverley and ends at the racecourse itself, we will explore how the town came to have such a special place in racing history.



Start Time: 10am to 12noon

Meeting Point: The Market Cross

Booking Essential: Yes **Cost:** Free

Contact: Beverley Tourist Information Centre, The Treasure House, Champney Road, Beverley, HU17 8HE. Tel: (01482) 391672 E: beverley.tic@eastriding.gov.uk

Additional Information: Please wear comfortable shoes for walking.

Disabled Ramble, Market Weighton Meander

A lovely circular ramble, taking in part of the Yorkshire Wolds Way National Trail, including the picturesque Londesborough Estate, the Hudson Way Rail Trail and the historic town of Market Weighton. The ramble will start and finish in the attractive village of Goodmanham at The Fiddle Drill tea rooms, who will also be providing a cuppa & cake at the end of the day. The route is suitable for mountain trike users and will be led by experienced disabled ramble leaders from Experience Community (www.experiencecommunity.co.uk). If you don't have or have never used a mountain trike, you can contact ramble leaders to chat about trying out and loaning a mountain trike before you book. info@experiencecommunity.co.uk 01484 841438.



Start Time: Meet at 11am for an 11:30am start.

Meeting Point: Fiddle Drill Tearooms, Main Street, Goodmanham, Market Weighton YO43 3JA
What3Words \\\pleasing.padding carriage. Parking and accessible facilities available.

Distance: Approx 7.5 miles

Booking Essential: Yes
Booking is available at eventbrite.co.uk – search Experience Community

Cost: £5

Additional Information:
For more information on Experience Communities, please visit their advert at the back of this brochure.
Any problems with bookings contact: Samantha.McGivern@eastriding.gov.uk

Monday evening meander

Calling all Ladies who want to get back in the saddle and meet new friends! Join the Breeze ladies for a cycling event.

Join the Breeze ladies for 12 miles cycle ride on country lanes from Driffeld Sports Centre to Hutton Cranswick, Hutton and back via Skerne. This is a great 1 hour ride for anyone wanting to get back in the saddle and test their capabilities.



Start Time: 6pm to last approximately 1 ho

Distance: 12 Miles

Meeting Point: Driffeld Leisure Centre, Bridlington Road, Driffeld. YO25 5HZ

Booking Essential: Yes

Contact: Julie Turner to book or a chat about the Breeze Ladies cycling. Tel: 07503193173 or book on www.LetsRide.co.uk search Driffeld
Email: ijohturner@gmail.com

Additional Information: Suitable for all bike types. We advise you wear a helmet and check the forecast to wear suitable clothing for the ride. Please bring a water bottle and make sure you have checked your tool bag has spare inner tubes, puncture repair kit, multi-tool, levers, etc. Please also check the forecast in case you require lights for the ride.

A day charter on Beverley Beck - New to the 2023 Festival!

All aboard! a trip on the Sun barge which takes it moorings on Beverley Beck. Join us for a relaxing day trip along the River Hull. Our charter takes us from Beverley Beck, through the lock by the marina, under the lift bridge, past the shipyard, along to Tickton and onto Aike Beck. Please bring along your own food and any drinks other than tea and instant coffee, which is provided. A map showing the route from Beverley Beck, through Grovehill Lock and onto the River Hull is provided and the crew will be on hand to answer your questions. Only 12 places – so book yours today!



Start Time: 9am – 3pm (5-6 hrs approximately)

Meeting Point: Cranehill Wharfe, Beverley Beck

Booking Essential: Yes

Cost: £12.50 each

Contact: Beverley Tourist Information Centre, The Treasure House, Champney Road, Beverley, HU17 8HE. Tel: (01482) 391672
E: beverley.tic@eastriding.gov.uk

Additional Information: There is a wheelchair lift, a toilet with disabled access. Nearest Car Park is Flemingate Shopping Centre (over 5 hours £5.00). Please note this charter has been arranged specifically for the Walking East Yorkshire Festival. Other day trips are available at: www.syntanbarge.org.uk/charters-bookings. Crewed by the Beverley Beck Preservation Society members.

Quiet Gardens of Beverley

The 10 different gardens we visit on the walk each have their own histories. Who do we have to thank for their existence? Stories about the gardens include fires and fights, a gas chamber, ghosts and even earthquakes.



Start Time: 2pm to 4pm

Meeting Point: Library Gardens in Champney Road

Booking Essential: Yes

Cost: Free

Contact: Beverley Tourist Information Centre, The Treasure House, Champney Road, Beverley, HU17 8HE. Tel: (01482) 391672
E: beverley.tic@eastriding.gov.uk

Additional Information: Please wear sensible shoes for walking.

Beverley Minster – Hidden spaces and secret places

Full details on page 20.

Green Plaques – History at eye-level – I bet you haven't seen it! walk

The Civic Society has placed a number of information plaques on the walls of buildings in Beverley. Have you noticed them? If not, this is your chance to be taken on a guided walk that seeks to find the plaques and explain why they are there. You will be amazed and at times horrified by the picture they paint of Beverley! Carli Black will be your guide.



Start Time: 10am to 11:30pm

Meeting Point: Outside the Beverley Arms Hotel, North Bar Within.

Booking Essential: Yes

Cost: Free

Contact: Beverley Tourist Information Centre, The Treasure House, Champney Road, Beverley, HU17 8HE. Tel: (01482) 391672
E: beverley.tic@eastriding.gov.uk

Additional Information: Please wear comfortable shoes for walking.

Disabled Ramble, Discover the Yorkshire Wolds Way from Fridaythorpe

Starting in the small village of Fridaythorpe, this ramble will follow part of the Yorkshire Wolds Way National Trail to take ramblers into the beautiful dry chalk valleys of Wolds. Enjoy fantastic views along this famously peaceful National Trail. The route is suitable for mountain trike users and will be led by experienced disabled ramble leaders from Experience Community. (www.experiencecommunity.co.uk). If you don't have or have never used a mountain trike, you can contact ramble leaders to chat about trying out and loaning a mountain trike before you book.
info@experiencecommunity.co.uk 01484 841438.



Start Time: Meet at 11am for an 11:30am start.

Distance: Approx 7 miles, including some inclines.

Meeting Point: Seaways Café, Fimber Road, Fridaythorpe, Driffield YO25 9RX
What3Words ///areas.spare.deprives
Parking and accessible facilities available.

Booking Essential: Yes
Booking is available at eventbrite.co.uk search Experience Community

Cost: £5

Additional Information:
For more information on Experience Communities, please visit their advert at the back of this brochure. Any problems with bookings contact: Samantha.McGivern@eastriding.gov.uk

Boat Cruise on Pocklington Canal

Join Volunteers from the Pocklington Canal Amenity Society aboard the New Horizons narrowboat. Enjoy the tranquillity of this rural canal and spot wildlife along the way. Experience operating a lock, and have a go at steering the boat. Bring a packed lunch or snack. Tea and Coffee will be served on the boat.



Start Time: Cruise one – 11am to 1:30pm

Meeting Point: Melbourne Arm Moorings, Melbourne. Near Pocklington. YO42 4QJ

Booking Essential: Yes

Cost: £7.50 per person

Contact: Beverley Tourist Information Centre, The Treasure House, Champney Road, Beverley, HU17 8HE. Tel: (01482) 391672
E: beverley.tic@eastriding.gov.uk

Additional Information: Toilet facilities available at the start and end of the trip (at the moorings). Please park responsibly in the village and walk down the lane at the side of the pub (200 yards approximately).

Sewerby circular walk on the Coastal path

The Windmill walkers invite you to a coastal walk leaving from Sewerby. This walk boasts fantastic coastal views. Taking us along the coastal path to Flamborough Lighthouse and village before returning through the historic Danes Dyke nature reserve. The walk will take about 2-2.5 hours with a short refreshment stop on route. On your return to Sewerby we have arranged FREE access to Sewerby Hall and gardens where you have the opportunity to purchase lunch in the Clock House café. (House entry tickets can be paid for additionally).



Start Time: 10am

Distance: 5 Miles

Meeting Point: On the island with a tree and two benches - opposite the main entrance to Sewerby Hall and Gardens on Church Lane, Sewerby, HU15 1DS
[What3Words/// took.dried.sticky](https://www.what3words.com/look-up/0G9G-0G9G-0G9G)

Booking Essential: Yes

Cost: Free

Contact: Beverley Tourist Information Centre, The Treasure House, Champney Road, Beverley, HU17 8HE. Tel: (01482) 391672
E: beverley.tic@eastriding.gov.uk

Additional Information: Please bring a drink and a snack for a refreshments break. The ravine of Danes Dyke has a number of steps – so a reasonable level of fitness is required for this section. The Windmill walkers are a friendly walking group formed in Skidby with over 70 members and a packed programme of walks. Scan the QR code to find out more.

Thixendale and the deserted village of Wharram Percy

Setting off from the Yorkshire Wolds village of Thixendale, we climb out of the dale along the Chalkland Way, then follow a classic Wolds path over to Fairy Dale where we can see the prehistoric Fairy Stones. From here, our route follows the Centenary Way to Wharram Percy where we break for a picnic lunch at the site of one of the largest and best-preserved of Britain's deserted medieval villages. Moving on from this historic and scenic spot, we follow the Yorkshire Wolds Way along dry valleys before heading down into Thixendale. There are several short steep ascents and descents.



Start Time: 10am

Distance: 8 Miles

Meeting Point: Outside St Mary's Church. Please park your vehicle responsibly in the village of Thixendale.
Address: St Mary's Church, Thixendale, YO17 9TG
What3words: \\ \\ otherwise.gets.games

Booking Essential: Yes

Cost: Free

Contact: Beverley Tourist Information Centre, The Treasure House, Champney Road, Beverley, HU17 8HE. Tel: (01482) 391672
E: beverley.tic@eastriding.gov.uk

Decoding Highgate

Our walk from Wednesday Market to Beverley Minster focuses your attention on the facades of Highgate's buildings. It's an important historic street. As we look around it we can sense its place in history from the Middle Ages to the present day. There are archaeological discoveries and architectural details to see and their meanings to learn about. There are the ghosts of disappeared buildings and there are stories about the people-- some famous, some not so-- who have lived, worked and settled in this street. Join Anne Perret as she helps you to decode it all!



Start Time: 2pm to 4pm

Meeting Point: Wednesday Market – outside Peck's fish shop

Booking Essential: Yes

Cost: Free

Contact: Beverley Tourist Information Centre, The Treasure House, Champney Road, Beverley, HU17 8HE. Tel: (01482) 391672
E: beverley.tic@eastriding.gov.uk

Additional Information: Please wear sensible shoes for walking.

Boots and Beer Walk

This ever popular event returns again, following the classic route along dry valleys Camp Dale, Raven Dale, Lang Dale and North Dale. It also includes a short stretch of the Yorkshire Wolds Way National Trail. The day caps off with the chance to sample a couple of the award winning Wold Top beers at the brewery at Hunmanby Grange. This comes with a savoury buffet to help round off the experience. Quality soft drinks are available for non-drinkers. Wold Top Brewery are supporters of the Yorkshire Wolds Way and they brew the official Wolds Way ale.



Start Time: 10:30am to finish at 4pm

Distance: 7.9 miles/12.7km

Meeting Point: Wold Top Brewery, Hunmanby Grange. YO25 3HS

Booking Essential: Yes

Cost: £10.00 to include two half pint samples and a savoury buffet.

Contact: Beverley Tourist Information Centre, The Treasure House, Champney Road, Beverley, HU17 8HE. Tel: (01482) 391672 E: beverley.tic@eastriding.gov.uk

Additional Information: No Children or dogs please.

Hull Maritime Tour

Explore Hull's rich maritime history with a guided tour of the city centre. Led by a group of dedicated volunteers who are accredited White Badge tour guides, learn more about Hull and how the city has been shaped by its past, present and future. Starting at the Museum Quarter gardens we visit the future location of the Artic Corsair at North End Shipyard, Queens Gardens, the exterior of the Maritime Museum and the new location of the Spurn Lightship in Hull Marina. Other key landmarks include Blaydes House, Trinity House and Hull Marine. (PLEASE NOTE THE SHORT TOUR TAKES IN HALF THE FULL ROUTE).



Start Time: 10:30am to 1pm

Distance: 1.5 miles

Meeting Point: Starting at the Museum Quarter, outside Hull and East Riding Museum on High Street.

Booking Essential: Walk up bookings usually available or secure you place at www.maritimehull.co.uk/get-involved/guided-tours

Additional Information:



RSPB Bempton Dusk Walk

As the nights start drawing in a little, join us for an evening walk out on the cliffs at RSPB Bempton. Located on a section of Englands Coastal Path, this dramatic chalk cliff line is home to a colony of nesting seabirds. We will be looking for signs of migrating birds and wildlife, like thrushes, goldcrests, warblers and possibly an owl. We will head down to the cliffs for a glimpse of the last few gannets and possibly a beautiful sunset.



Start Time: 5.30pm – 7.30pm

Distance: 2.5km

Meeting Point: RSPB Bempton Visitor Centre, Cliff Ln, Bempton, Bridlington YO15 1JF

Booking Essential: Yes

Cost: £7

Contact: bempton.cliffs@rspb.org.uk or 01262 422212

Additional Information: Booking via <https://events.rspb.org.uk/bemptoncliffs>

Autumn hues ride

Calling all Ladies who want to get back in the saddle and meet new friends! Join the Breeze ladies for a cycling event.

This is a short, flat ride (great for beginners) and the last evening ride of the year. We will head from the Sportscentre to Skerne and follow the country lane down to Rotsea, then we head back up the Rotsea lane to Skerne and Driffield. This is a very steady pace and nobody ever gets left behind.



Start Time: 6pm to last approximately 4hrs

Distance: 12 Miles

Meeting Point: Driffield Leisure Centre, Bridlington Road, Driffield. YO25 5HZ

Booking Essential: Yes

Contact: Julie Turner to book or a chat about the Breeze Ladies cycling. Tel: 07503193173 or book on www.LetsRide.co.uk search Driffield Email: ijohturner@gmail.com

Additional Information: Suitable for all bike types. We advise you wear a helmet and check the forecast to wear suitable clothing for the ride. Please bring a water bottle and make sure you have checked your tool bag has spare inner tubes, puncture repair kit, multi-tool, levers, etc. Please also check the forecast in case you require lights for the ride.

Cover to Coast – Spurn Point Walk

Celebrate 'year of the coast 2023' with a led walk along the stunning Spurn Point, Yorkshire's very own Land's End – an iconic and constantly moving peninsula which curves between the North Sea and the Humber Estuary. At over three miles long but as little as 50 meters wide, this landscape is unique and ever-changing. Take in the splendour of this nature reserve whilst enjoying the magnificent coastal landscape. Along the route we discover a number of Active Beacons designed to monitor coastal erosion and a great place to take a few snaps of your own. We also pay a visit to the lighthouse restored in 2016 where we have the opportunity of have a look inside. Finish off with a visit to the Spurn Discovery Centre and café facilities.



Start Time: 10am to 3pm (timings may vary and is based on the speed of the walkers).

Distance: 7 miles

Meeting Point: Spurn Point Car Park, opposite the Spurn Discovery Centre, Spurn Road, Hull, HU120U

Booking Essential: Yes **Cost:** Free

Contact: www.activecoast.org

More Information:
Visit www.activecoast.org

More Information: Age 16+ only. Participants are advised to wear comfortable, waterproof clothing and sturdy shoes for this outdoor activity alongside bringing a packed lunch and water to drink throughout the day.

Waking the Geo-Park around Flamborough Head

Join us for a walk around Selwicks Bay at Flamborough to illustrate the criteria required by UNESCO for East Yorkshire to become a Geopark. We will be going onto the beach to look at the fabulous geology of the folded and faulted Chalk and its links to prehistoric activities, ancient seas, climate change, water supply and building stone. After lunch we will walk around the Local Nature Reserve looking at the specular coastal scenery as well as visiting the Bird Observatory. Along the way we will become connected with are ancient ancestors who inhabited the cliff tops and hunted on the now lost Doggerland. The walk will finish with a look at The Chalk Tower which has a fascinating history and could be built on the foundations of a Roman Signal Station. In all you will travel some 90 million years in one day!



Start Time: 10am to 4pm

Distance: 5 Miles

Meeting Point: Selwicks Bay car park, YO15 1AR
///drama.clashing.stir

Booking Essential: Yes **Cost:** Free

Contact: Beverley Tourist Information Centre, The Treasure House, Champney Road, Beverley, HU17 8HE. Tel: (01482) 391672
E: beverley.tic@eastriding.gov.uk

Additional Information: Toilets and refreshments at Selwicks Bay. Very steep steps and cliffs, rough beaches and muddy fields to cross.

Car Park is Pay and Display (full day ticket required) with toilets and café Children and dogs' welcome Steep steps, uneven/slippery paths and beach, and unstable cliffs

Side Oven Bakery – tour and tasting!

Situated on the edge of the Yorkshire Wolds, Carr House Farm is the home of the Side Oven Bakery, where the Sellers family have lived and worked for five generations. A wide range of cereals are grown on the farm, which following harvest is taken to the mill house where they are milled using a traditional stone ground mill. Join the team for a talk and tour of the Bakery and Mill to learn about how the farm has diversified into an award winning bakery. We finish off with a light lunch provided by the Bakery. You will also have the opportunity to do the Farm walk and nature trail and buy some of their delicious produce.



Start Time: 10am to 12:30pm

Meeting Point: Side Oven Bakery, Carr House Farm, Foston on the Wolds, Driffield. YO25 8BS

Booking Essential: Yes

Cost: £7.50

Contact: Beverley Tourist Information Centre, The Treasure House, Champney Road, Beverley, HU17 8HE. Tel: (01482) 391672
Email: beverley.tic@eastriding.gov.uk

Additional Information: Plenty of parking and we also have disabled access and facilities.

1779 Heritage Trail Walk – celebrating the Battle of Flamborough Head

Our walk starts at Bridlington Harbour Museum to view the museum's paraphernalia of photographs and harbour models before proceeding along the promenade in a northerly direction to Sewerby Hall where we talk about the history of the house with reference to the Battle of 1779, namely Amery Graeme's diary notes about burying family treasures in the garden and escaping to York. From here we walk around the headland to Flamborough's Chalk Tower where we have the chance to look inside this famous tower built in 1674. We will be stopping for a morning coffee and lunch along the way, so please bring a flask and plenty to eat and drink. Please note a minibus is available at the end of the walk to take you back to Bridlington!



Start Time: 10:00am

Distance: 6 Miles


Meeting Point: Outside - Bridlington Harbour Museum, 2 Harbour Road, Bridlington. East Yorkshire. YO15 2NR

Booking Essential: Yes

Cost: Free

Contact: Beverley Tourist Information Centre, The Treasure House, Champney Road, Beverley, HU17 8HE. Tel: (01482) 391672
E: beverley.tic@eastriding.gov.uk

Additional Information: Please wear sensible shoes for walking. There are a number of steps to navigate around the ravines of Danes Dyke and South Landing.

Beverley Ale Trail		
<p>Join tour guide Paul Schofield for an intoxicating guided walk highlighting the town's past and present pubs, inns, taverns and coaching inns – stopping for a swift drink at a few of them on the way round! We start at The Royal Standard Pub in North Bar Within and finish off at the Monks Walk Pub down Highgate – with some parts dating back to 1270!</p> 	Start Time: 7pm to finish at 9:45pm	
	Distance: 1.5 miles approximately	
	Meeting Point: Inside the Royal Standard Pub, North Bar Within.	
	Booking Essential: Yes	Cost: £5
	Contact: Beverley Tourist Information Centre, The Treasure House, Champney Road, Beverley, HU17 8HE. Tel: (01482) 391672 E: beverley.tic@eastriding.gov.uk	
Additional Information: Please wear sensible shoes for walking.		

WALKING AND OUTDOOR ACTIVITIES AVAILABLE THROUGHOUT THE WEEK

Walking with Alpacas - Take a stroll with our beautiful furry friends!		
<p>Walks from our main farm in the beautiful village of North Cave offer a full alpaca experience. This could be families with younger children or those who want to get more up close and personal with our furry friends. The experience includes up-close interaction time with our alpaca herd (feed and stroke them) and then you will head out on a 45 minute alpaca walk around our farm. The walk includes some small obstacles and jumps for the alpacas and you will learn lots of interesting facts, have plenty of photo opportunities and truly get to know your alpaca and what it is to look after them. Our herd is really gentle and there is no rush on the walks, we go at a nice pace for everyone. Once back at our farm you will be able to meet our lambs and goats too.</p>   	Start Time: Daily at various times	
	Meeting Point: Swallows Retreat, South Ings Lane, North Cave, HU15 2PA	
	Booking Essential: Yes	Cost: Prices range from £25-£35
	Contact: ingsparkalpacas.co.uk / 07427557876 ingsparkalpacas@gmail.com	
	Additional Information: The full experience lasts around 1 hour and 30 minutes. We do take multiple bookings for each trek so please let us know if you would prefer to trek as a private group.	
		

WALKING AND OUTDOOR ACTIVITIES AVAILABLE

What was here App - Do it yourself heritage trails on a free App

'What Was Here?' is a virtual time machine on smartphone or table devices that lets users see what used to be at various locations across Hull and East Yorkshire.

Use historic photos and maps to explore the past and choose from over 30 heritage walking trails including Bridlington, Beverley, Hull, Withernsea, Pocklington, and Stamford Bridge.



The App: 'What Was Here?' is free on Google Play Store and the App Store.

Desktop: There's also a great experience for desktop users available at www.whatwashere.org

Contact: More details can be found on the East Riding Archives website under 'Archives Online' at www.eastridingarchives.co.uk/archives-online/

Love Exploring App

Download the Love Exploring app and search for participating site in East Yorkshire.

Have you ever visited somewhere and wished there was more to do with the family? Or maybe you like exploring on your own and you are always on the lookout for ways to find out more about the places you are visiting? Love Exploring puts the power of discovery in your hands by providing a range of discovery games and guided tours that are fun to do and free to use.



Walking for Health

East Riding of Yorkshire Councils have a programme of Health Walks that cover the entire East Riding, to encourage people to get out and about and enjoy the natural beauty of the area, whilst staying fit and healthy. Walks are short and over easy terrain and are open to everyone but are especially aimed at those who are least active. 22 different walk locations, offering a variety of lengths are supported by a team of friendly, specially trained volunteers who are on hand to provide encouragement and support, and make sure no one gets left behind. Many walkers start walking to improve their health but find it easy to keep coming back because of all the new friends they have made. As well as all the physical health benefits, walking for health is also great for your social life!

<https://www.eastridingleisure.co.uk/health/walking-for-health/>



EAST RIDING
OF YORKSHIRE COUNCIL



THROUGHOUT THE WEEK

Three Mills of the Southern Wolds

Download and follow 3 trails centring around the stories of 3 mills on the southern Wolds. Each trail and mill tell a very different story, and all are situated in beautiful scenery ideal for reasonably easy strolls.

A walk around Hessele Mill

Hessele Mill has a spectacular site underneath the Humber bridge and alongside the magnificent Humber and the trail wanders up into the Hessele country park also known as "Little Switzerland" with ponds and wildflowers.

Distance: 2km

Location: Hessele Mill can be found on Hessele foreshore just under the Humber Bridge with free parking to the rear

A walk to the environs of the first windmill in the UK

The Weedley walk. This is a walk without a mill (now) but takes you near where the first windmill in England was built in 1187. It is longer more scenic and a little more challenging but rewards with some amazing Wolds views

Distance: 8km

Location: The start for the Weedley Windmill walk is by the layby on Beverley Road leading from South Cave to Riplingham/Little Weighton

A walk around Skidby Mill

Skidby Mill this walk can either be 6 miles (10 km) or just over 1 mile (2 km) both walks involve strolling past the mysterious Gallows Hill where sheep rustlers were alleged to have been hanged in the reign of Charles 11, then the longer walk strolls around a golf club and then across the old railway line before turning back along Skidby's pretty main street back to the mill. For those visitors who can attend Hessele Mill on Saturday 9th September their will be some children's craft activities going on.

Distance: 3km or 10km

Location: Skidby Mill can be found just off the A164 take the first turn on the left; Skidby Mill and free car park can be found about 400 metres on the left

Booking: No need to book, check online for opening times for Hessele and Skidby Mill if you wish to go in.

Hessele Mill: FREE **Skidby Mill:** Adults: £2.50, Conc: £1.50 Child 5+£1.25 U5s FREE

Visit: <http://bitly.ws/JLS>



WALKING AND OUTDOOR ACTIVITIES AVAILABLE

Sewerby Hall and Gardens Outdoor activities for families

SEWERBY HALL AND GARDENS



Situated in a dramatic cliff-top position with spectacular views over Bridlington and set in 50 acres of early 19th Century parkland, Sewerby Hall and Gardens offers something for everyone, from the magnificent gardens and zoo to the deep-rooted heritage of the house. Enjoy a woodland wander and explore nature at its wildest and finest by following the paths through our woodland and keeping a look out for resident wildlife. Download the free 'Love Exploring' App and have fun finding the dinosaurs in the grounds. Find the monkey puzzle tree carvings on the woodland walk. Scan QR codes as you walk around the park to discover images, photos and podcasts about the history of the Estate. Other events to enjoy include:

Opening Times: House – 11am to 4:30pm daily (last admission 4pm)
Zoo – 10:00am to 4:30pm (last admission 4pm)

Booking Essential: Book online or pay at the ticket kiosk on arrival.

Address: Sewerby Hall and Gardens
Church Lane, Sewerby. YO15 1EA

Cost: Adult £9.50, Child (3-15yrs) £7.20
Family: 2+2 £32.00

BRICKLIVE Animal Paradise

Brand new outdoor exhibition BRICKLIVE is an exclusive wildlife kingdom around the gardens. From Saturday, 26 August to Sunday, 24 September, BRICKLIVE: Animal Paradise will bring to life an incredible display of some of the world's most beautiful endangered species, hand-built using 556,086 bricks. A total of 15 animal statues - many of which will be life size - around the gardens will offer a fascinating and memorable day out.

Woodland Activity Area

Designed with children in mind, the activity area features a range of thrilling play equipment including a zip line, balance beams, steppingstones and a wobbly bridge.

Nature Detective

Download the Nature Detective pamphlet to discover what wildlife you can find around the estate on your visit. Themed around the four seasons, they contain various wildlife activities you can take part in. https://www.sewerbyhall.co.uk/whats-on/?entry=180101_0160

Orienteering

Aimed mainly at families, our Orienteering course has been designed by HALO (Humberside and Lincolnshire Orienteers) and uses various routes throughout the estate ranging in skill from a short introductory course suitable for beginners to a longer, more difficult course for the more competitive. Our Orienteering pack contains all you need to negotiate the various courses. Additional charges apply.

Brass Rubbings

Scattered around the estate are brass plaques mounted on posts and fences depicting various mammals and birds. All you have to do is find the plaque relevant to the page in our booklet and then make your very own brass rubbings. The booklet is full of interesting facts about each animal. Why not see if you can find them all?

18 Hole Putting Green

The whole family can enjoy our popular 18 hole putting green, adjacent to the gardens and outdoor games area. A friendly challenge or a chance to brush up on your putting skills?

THROUGHOUT THE WEEK

Sewerby Hall and Gardens Outdoor activities for families

Picture Podcast QR Codes

As you walk around the park and gardens look out for the QR Codes. Using images and photographs from the collection at Sewerby Hall, the podcasts will tell you a little more about the history of that part of the estate. Just scan the code with your phone and then tap on the link to see and hear the podcast. The podcasts last between one-and-a-half and three-and-a-half minutes.

Animal Feeding at the Zoo

Lemurs 2pm, Coatis 2.15pm, Penguins 3pm, Hoof stock 3.30pm.

Outdoor Games Area

Situated adjacent to the 18 hole putting green, our games area contains a permanent outdoor table-tennis table, boules, hula hoops, skittles, various giant games including Jenga, Noughts and Crosses and Connect Four together with numerous picnic tables.

A trail through time

Download the free What Was Here app and compare the Sewerby Hall of now with times gone by. The Sewerby Hall and Gardens Heritage trail is included in the app and features a gentle 1 mile walk around the estate. Follow the map and see photos from the 1930s to 1980s at various landmarks. The app has been developed by East Riding Archives and available to download free on the Apple app store or Google play.

Into the Pictures Podcast QR Codes

As you walk around the park and gardens look out for the QR codes. Using images and photographs from the collection at Sewerby Hall, the podcast will tell you a little more about the history of that part of the estate. Just scan the code with your phone and then tap on the link to see and hear the podcast.

Love Exploring App

Download the free 'Love Exploring' App to your mobile device before your visit to enjoy a variety of games and trails from the palm of your hand. Have fun finding the fairies and dinosaurs in the grounds of Sewerby Hall and Gardens.

Time travellers Theatre Trail - Download the FREE App today!

This FREE outdoor walking theatre trail allows listeners to travel into Beverley's past, meet local characters, and discover what the town's theatrical life really looked like in times gone by.

Stopping off at 12 historic sites in the market town of Beverley, the app takes you on an expedition through time with actors Annie, Richard, Evie, Gordon and a host of historical figures, from Henry V to artist Mary Elwell.

At each site listeners are immersed in a thrilling audio drama performance bringing alive stories that took place on that very spot!

Great fun for the whole family. Scan the QR codes and download the app. The trail is suitable for families and children aged 4+.



WALKING AND OUTDOOR ACTIVITIES AVAILABLE

Horse riding along Woldgate Woods

It's never too late to get back in the saddle! Join Woldgate Trekking Centre (just outside Bridlington) for a one hour trek along an old Roman road, through woodland and over dales – a location which inspired painter David Hockney to create some of his most memorable work. Accommodating both beginners and advanced riders. All treks are escorted by experienced riders, and nervous beginners by be led if desired. Eastfield Garden centre is only two miles away, where you can stop off (before or after) your ride for a coffee and a bite to eat.



Woldgate Trekking Centre

Start Time: Tuesday to Friday 10:00am – 11:am, 11:30am – 12:30pm, 1:00pm – 2:00pm, 2:30pm – 3:30pm, 4:00pm – 4:00pm. Weekends 1:00pm – 2:00pm, 2:30pm – 3:30pm, 4:00pm – 5:00pm.

Meeting Point: Woldgate Trekking Centre, 14 Woldgate, Bridlington YO16 4XE

Booking Essential: Yes **Cost:** £25

Contact: Woldgate on Tel: (01262) 673086

Additional Information: No experience or equipment needed. Arrive 30 minutes before your departure choice. 14 stone weight limit, parental guidance required for the very young. Disabled welcome.

'On your Bike' at Spurn Point

Enjoy Spurn National Nature Reserve by bike. Hire a selection of adult and children's bikes from the café in the discovery centre and enjoy a leisurely cycle to the tip of spurn point. The Lighthouse is open Friday, Saturday's and Sunday's and most School Holiday's. Enjoy some well-earned refreshments in the discovery centre when you return.



Yorkshire *Coast*
Wildlife Trust YEAR OF THE
2023

Start Time: 10am to 4pm

Parking: Available from the Spurn Discovery Centre

Booking Essential: Yes **Cost:** £10 per Bike for a full day

Contact: 01964 650144 or email spurn@ywt.org.uk

Additional Information: To reach the Spurn Lighthouse and Spurn Point you will need to push bikes over a sandy section at Spurn that we call the wash-over, this takes around 15 minutes. Some identification will be required for bike hire purposes.

Beverley Ladies Cycling

Calling all Ladies who want to get back in the saddle and meet new friends! Joint the Breeze ladies for a cycling event. We welcome newcomers to Beverley Breeze cycling at any time – just check out our website. Why not start with an easy-going 10 miles and see how you get on. Over the outdoor festival we have:

10th September – Easy-going 10 miles. 10am.

17th September - Steady 20 miles. 10am.

20th September- Easy-going 10 miles. 6pm.

21st September - Challenging 30 miles.

Meeting Point: Beverley Leisure Centre, Flemingate, Beverley HU17 0LT

Booking Essential: Yes – via the website

Contact: www.letsride.co.uk/breeze search Beverley Email: Brenda Cartwright bc.8@hotmail.co.uk to chat about the rides at any time.

Additional Information: Suitable for all bike types. We advise you wear a helmet and check the forecast to wear suitable clothing for the ride. Please bring a water bottle and make sure you have checked your tool bag has spare inner tubes, puncture repair kit, multi-tool, levers, etc. Please also check the forecast in case you require lights for the ride.

IT'S A WRAP!



Thank you for taking part in the Walking East Yorkshire Festival. Sign up to our newsletter at www.walkingeastyorkshirefestival.co.uk to receive regular updates about walking events.



BE KIND TO EAST YORKSHIRE

The region is blessed with the stunning countryside of the Yorkshire Wolds Way and a beautiful coastline spanning from the towering cliffs of Flamborough Head to the sweeping Spurn Point. The great outdoors is stunning here, so come and enjoy it and do your part in respecting and protecting nature, the coast and countryside, by following the Countryside Code and keeping to designated trails and Public rights of Way. Remember to leave the area as you found it for others to enjoy...

Walking for the environment

For shorter trips, walking and cycling is a good way to reduce your carbon footprint and can have a positive impact on your physical health and mental wellbeing. Switching just one trip a day from car driving to active travel methods such as walking or cycling, can reduce your carbon footprint by around 0.5 tonnes per year!

Choosing to walk rather than drive for short journeys also helps to protect biodiversity - it creates less noise, less air pollution, and results in fewer emissions that are warming the atmosphere"



EXPERIENCE
COMMUNITY

Experience Community is a charity and not-for-profit organisation that helps disabled people access the outdoors through walking, cycling, arts and conservation activities. We use specialist outdoor equipment such as off-road wheelchairs called Mountain Trikes and a range of adapted hand and foot pedalled tricycles. We have been working with the East Riding of Yorkshire Council to identify a number of inclusive walking routes for disabled people and we're proud to be taking part in the Outdoor Festival to lead 2 guided walks. We can provide Mountain Trikes for people who do not have their own and people with other off-road mobility equipment are welcome to join our rambles (pre-booking essential).

If you've never tried a Mountain Trike, you can always come along to one of our sessions at Leeds Urban Bike Park, Middleton, LS10 3TN on a Thursday or Friday so that you're familiar with the equipment before the Outdoor Festival. If you have your own off-road equipment but can't make it to our guided walks, you can always find the routes on our www.phototrails.org website.

For further information, please contact us on info@experiencecommunity.co.uk







LOVE EAST YORKSHIRE

From wide open beaches and rugged cliff tops to stately homes and their immaculate gardens, East Yorkshire truly has something for everyone. Whether you want to walk the Wolds Way, or sample the boutiques and bars of Beverley, East Yorkshire is not only home to Puffins Galore and the 'Active Beacon' Photopost Project but much, much more. Enjoy your visit.

 VISIT
EAST
YORKSHIRE

 [visiteastyorkshire](http://visiteastyorkshire.co.uk)  Visit East Yorkshire VisitEastYorkshire.co.uk



Walking East Yorkshire Festival if organised by
The Visit East Yorkshire Events Team on behalf
of East Riding of Yorkshire Council.


**HAVE
YOUR
SAY**

We would like to hear from you about
your event experience.

Scan the QR code, give us your
feedback and enter our prize draw!

Find out more about our events on our
social media



 @visiteastyorkshire

 @visiteastyorkshire

 @VisitEastYorks